



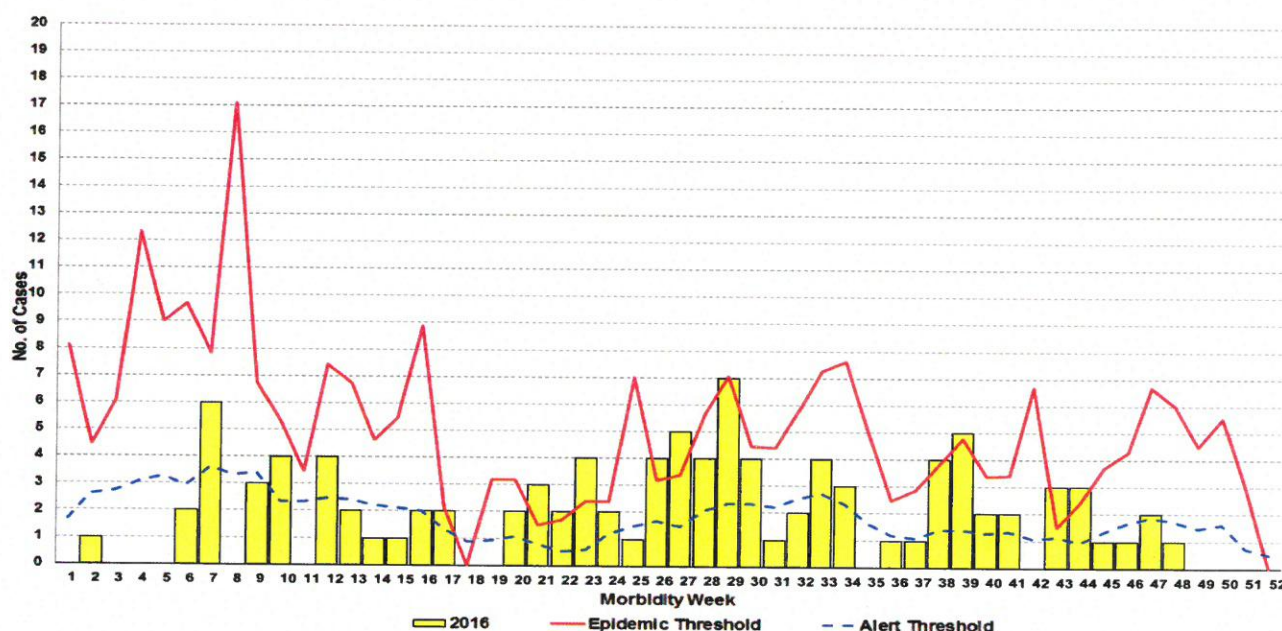
Morbidity Week 48: January 1 – December 3, 2016

Epidemiology Bureau
Public Health Surveillance Division

TRENDS IN THE PHILIPPINES

A total of **102** diphtheria cases were reported nationwide from January 1 – December 3, 2016. This is **2.86%** lower compared to the same period last year. Figure 1 shows the distribution of the reported diphtheria cases in the country by morbidity week.

Fig. 1 Alert and Epidemic Threshold and Reported Diphtheria Cases by Morbidity Week, Philippines, as of December 3, 2016 (N=102)



GEOGRAPHIC DISTRIBUTION

The number of diphtheria cases vary by region. Figure 2 shows the distribution of reported diphtheria cases by region in comparison to the same time period last year. There is an increase in the number of reported cases from regions NCR, ARMM, 1, 2, 4A, 5, 6, 11, CAR and CARAGA, and a sustained presence of diphtheria cases in region 3, 7, 10 and 12.

Table 1 indicates the reported diphtheria cases by region in the Philippines. Majority of the reported diphtheria cases came from NCR. Table 2 shows the regions with the most number of reported diphtheria cases and its affected cities/municipality by case classification, outcome and CFR. No new cluster⁽¹⁾ of diphtheria cases identified within the past 4 Morbidity Weeks.

⁽¹⁾Cluster Definition: 2 or more diphtheria cases from the same barangay, reported within 4 consecutive weeks.



Morbidity Week 48: January 1 – December 3, 2016

Epidemiology Bureau
Public Health Surveillance Division

Fig. 2 Reported Diphtheria Cases by Region, Philippines, as of December 3, 2016 (N=102)

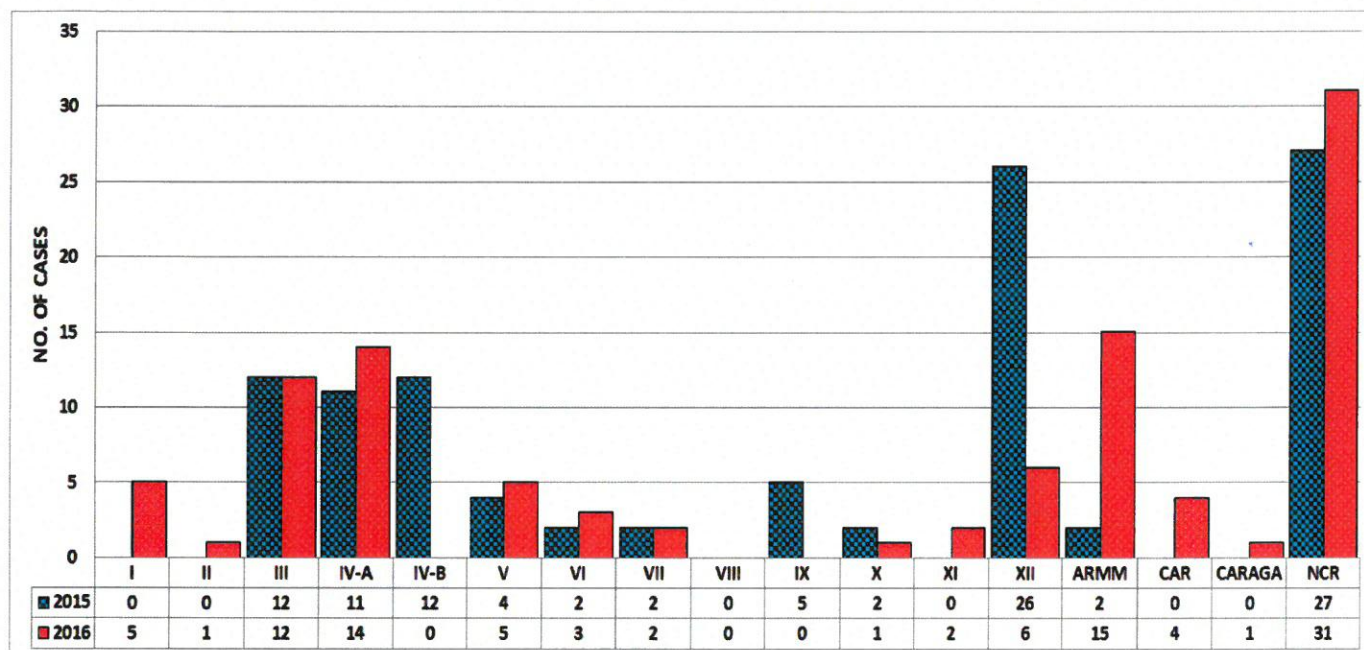


Table 1. Reported Diphtheria Cases by Region, Philippines, as of December 3, 2016 (N=102)

REGION	Case Classification		Reported Cases	Died	CFR %
	Probable Cases	Confirmed Cases			
I	5	0	5	3	60.00
II	1	0	1	1	100.00
III	10	2	12	4	33.33
IV-A	10	4	14	7	50.00
IV-B	0	0	0	0	-
V	5	0	5	1	20.00
VI	3	0	3	1	33.33
VII	2	0	2	0	0.00
VIII	0	0	0	0	-
IX	0	0	0	0	-
X	1	0	1	0	0.00
XI	2	0	2	1	50.00
XII	5	1	6	3	50.00
ARMM	12	3	15	7	46.67
CAR	2	2	4	0	0.00
CARAGA	1	0	1	0	0.00
NCR	12	19	31	10	32.26
PHL	71	31	102	38	37.25



Morbidity Week 48: January 1 – December 3, 2016

Epidemiology Bureau
Public Health Surveillance Division

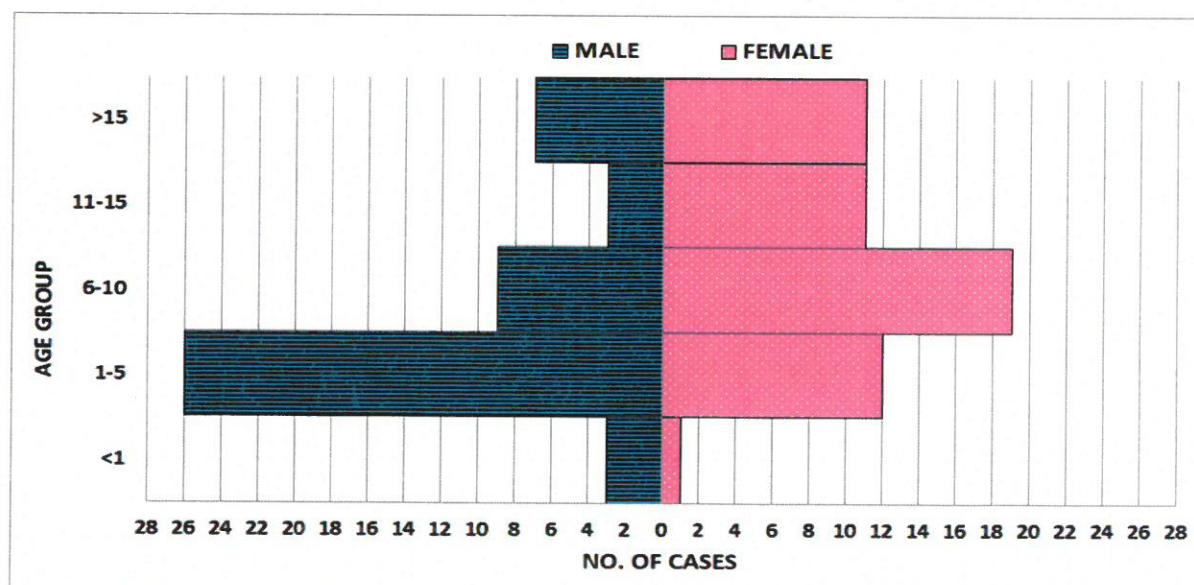
Table 2. Reported Diphtheria Cases in NCR and ARMM, Philippines, as of December 3, 2016

PROVINCE	CITY/MUNICIPALITY	PROBABLE CASES	CONFIRMED CASES	TOTAL REPORTED CASES	DIED	CFR %
METRO MANILA	CALOOCAN CITY	1	1	2	0	0.00
	MALABON CITY	0	4	4	2	50.00
	MANDALUYONG CITY	1	3	4	1	25.00
	MANILA	5	4	9	3	33.33
	NAVOTAS	0	1	1	1	100.00
	PASIG CITY	0	2	2	2	100.00
	QUEZON CITY	3	3	6	1	16.67
	TAGUIG CITY	2	1	3	0	0.00
	NCR	12	19	31	10	32.26
MAGUINDANAO	BULUAN	1	0	1	1	100.00
	DATU ODIN SINSUAT	2	1	3	1	33.33
	DATU PAGLAS	2	0	2	1	50.00
	KABUNTALAN	1	0	1	1	100.00
	NORTH UPI	1	0	1	0	0.00
	PARANG	3	0	3	1	33.33
	SHARIFF SAYDONA MUSTAPHA	1	1	2	0	0.00
	SULTAN KUDARAT	0	1	1	1	100.00
	LANAO DEL SUR	1	0	1	1	100.00
	ARMM	12	3	15	7	46.67

PROFILE OF CASES

As shown in figure 3, we have **48 males and 54 females** and most of them belong to the 1-5 years old age group. That will be **37.25%** of the **total cases**. Thirty eight (37%) of reported cases were not administered with any dose of DPT/PENTA valent vaccine (Figure 4). Thirty eight (37%) of the reported diphtheria cases have **died** (Figure 5).

Fig. 3 Reported Diphtheria Cases by Age Group and Sex, Philippines, as of December 3, 2016 (N=102)





Morbidity Week 48: January 1 – December 3, 2016

Epidemiology Bureau
 Public Health Surveillance Division

Fig. 4 Reported Diphtheria Cases by DPT Doses and Region, Philippines, as of December 3, 2016 (N=102)

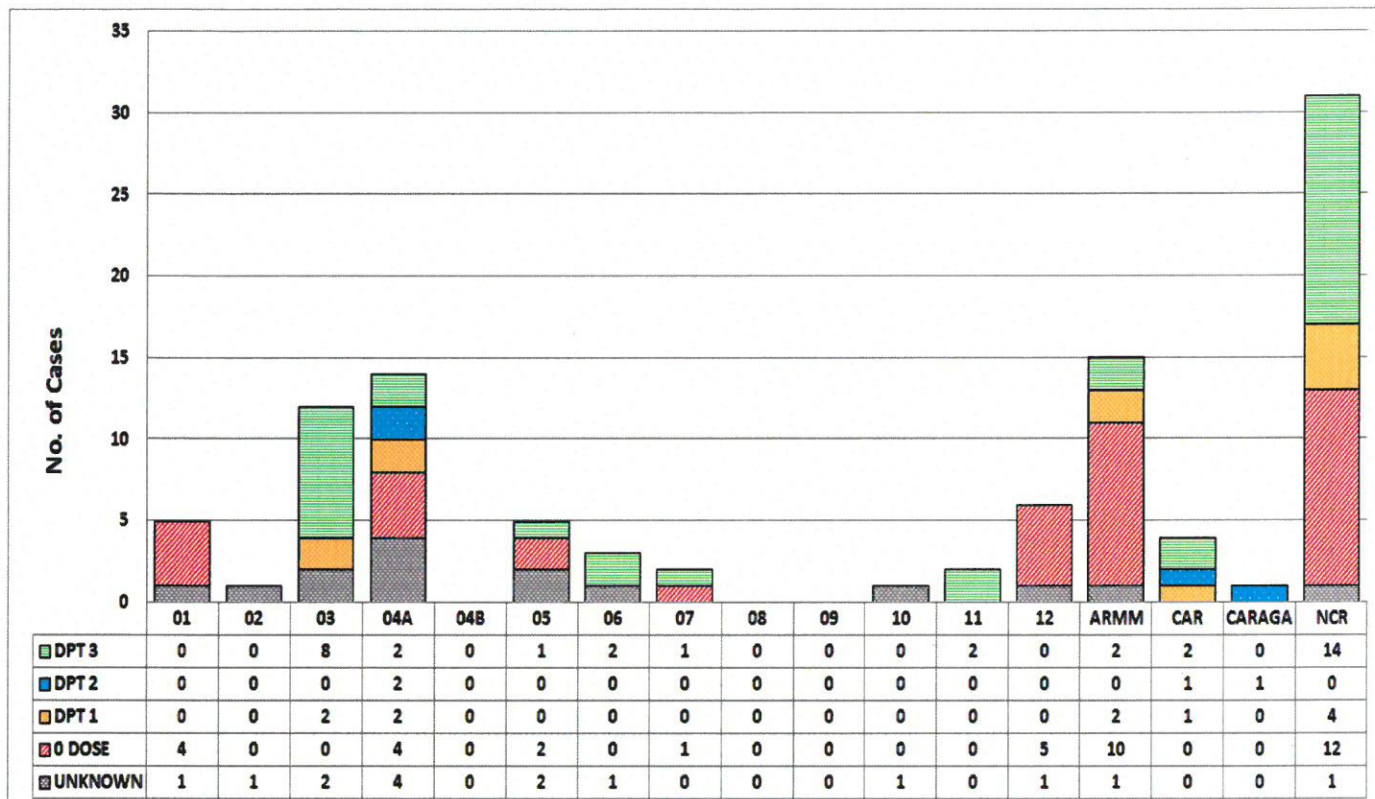
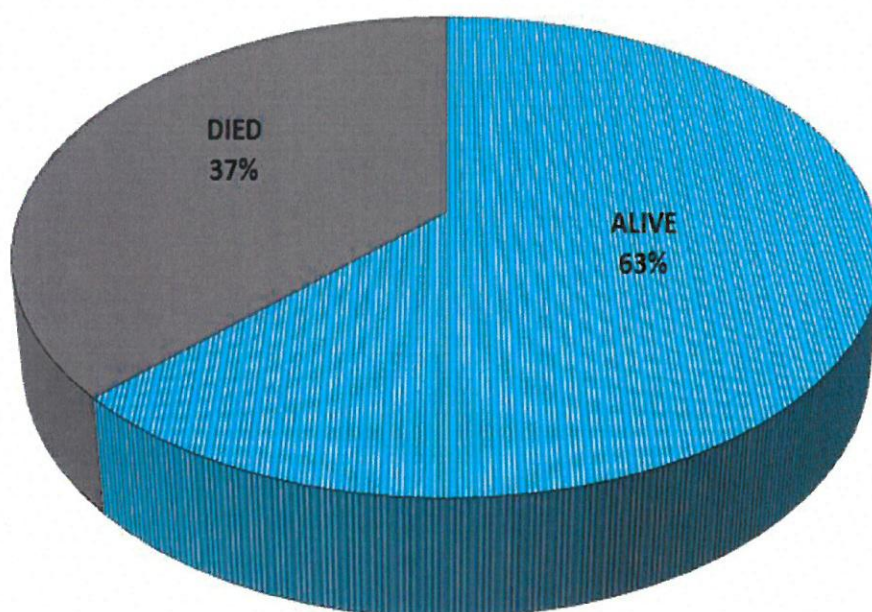


Fig. 5 Reported Diphtheria Cases by Outcome, Philippines, as of December 3, 2016 (N=102)





Morbidity Week 48: January 1 – December 3, 2016

Epidemiology Bureau
Public Health Surveillance Division

Standard Case Definition of Diphtheria:

• **Probable Case:**

- A person with an illness of the upper respiratory tract characterized by laryngitis or pharyngitis or tonsillitis, and adherent membranes on tonsils, pharynx and/or nose.

• **Confirmed Case:**

- A probable case that is laboratory confirmed or linked epidemiologically to a laboratory-confirmed case.

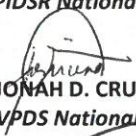
Note: Persons with positive Corynebacterium diphtheriae cultures who do not meet the clinical description (i.e. asymptomatic carriers) should not be reported as probable or confirmed diphtheria cases.

Editorial Board


IRMA L. ASUNCION, MD, MHA, CESO IV
Director IV, Epidemiology Bureau


GENESIS J. SAMONTE, MD, MSc, PHSAE
OIC-Division Chief, PHSD


JUNE CANTATA B. CORPUZ, RN
Nurse III, PIDSR National Coordinator


JEZZA JONAH D. CRUCENA, RN
Nurse III, VPDS National Coordinator


ALLAN P. IGNACIO
Statistician II, PHSD