



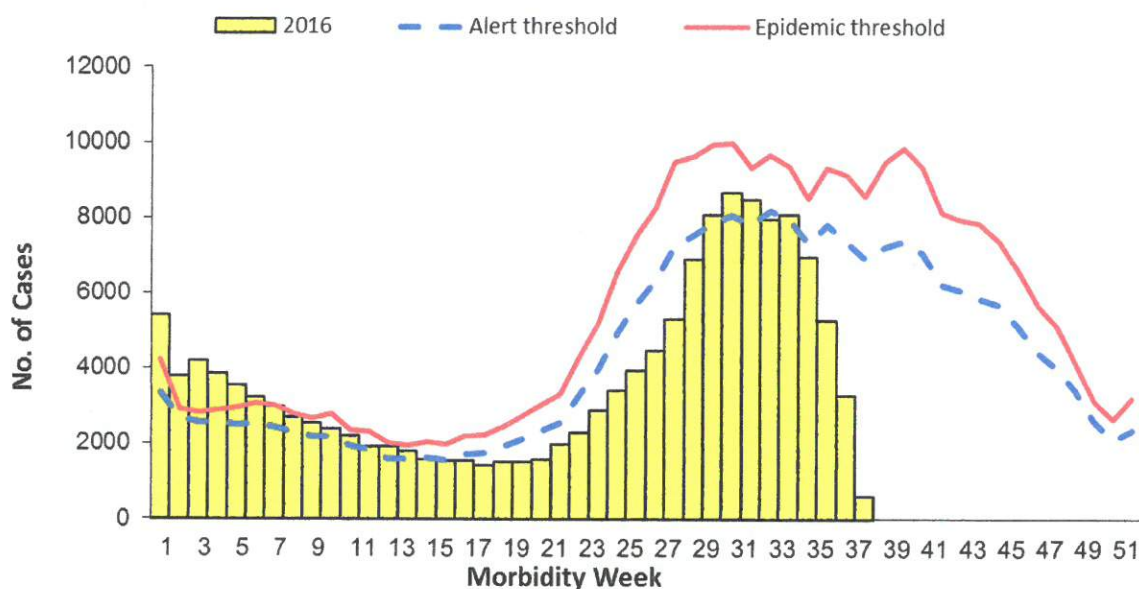
Morbidity Week 38 : January 1 – September 24, 2016

Epidemiology Bureau
Public Health Surveillance Division

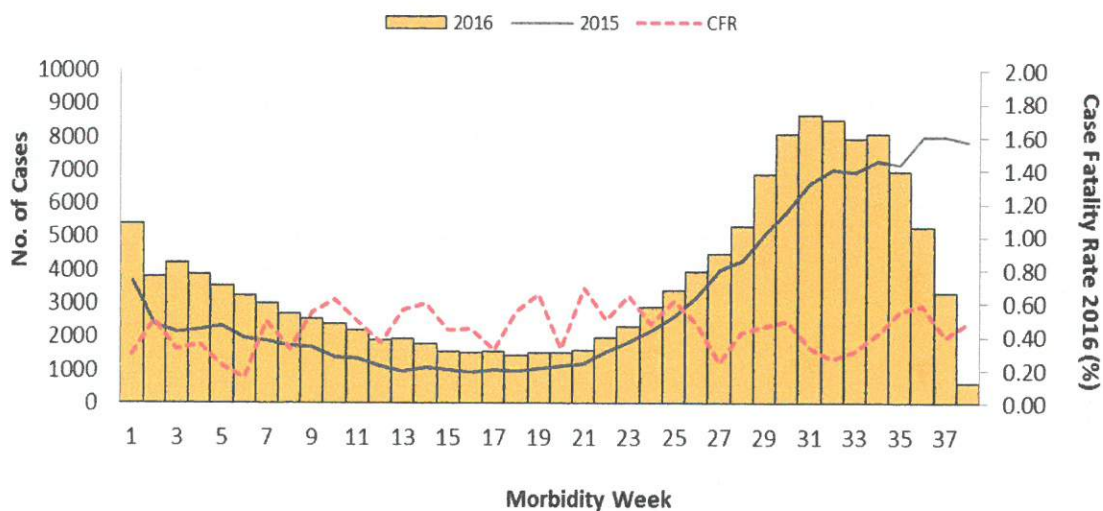
Trend in the Philippines

A total of **142,247** suspect dengue cases were reported nationwide from January 1 to September 24, 2016. This is **11.5%** higher compared to the same time period last year (**127,572**).

**Fig. 1 Suspect Dengue Cases by Morbidity Week
Philippines, as of September 24, 2016 (N=142,247)**



**Fig. 2 Suspect Dengue Cases by Morbidity Week,
Philippines, as of September 24, 2016
2016* vs 2015 (N=142,247)**



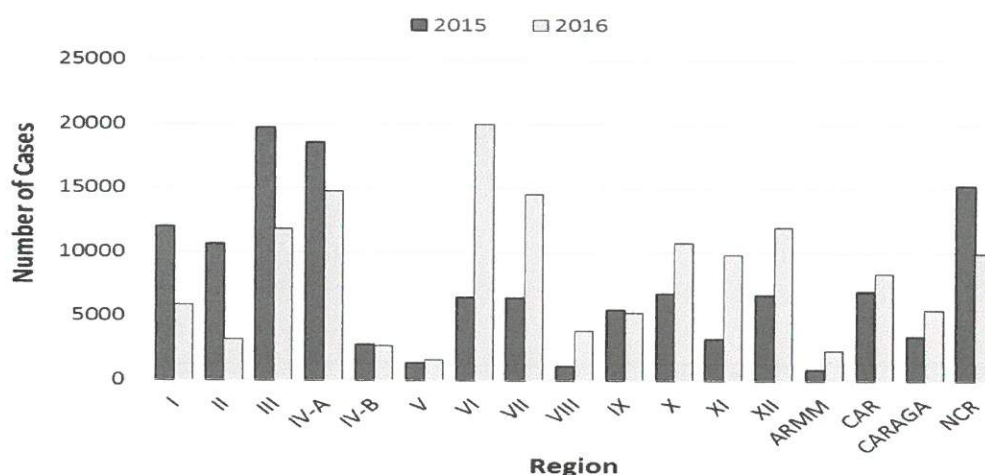
*NOTE: Case counts reported here do NOT represent the final number and are subject to change after inclusion of delayed reports and review of cases.



Geographic Distribution

Most of the cases were from the following regions: **Region VI** (14.1%), **Region IV-A** (10.4%), **Region VII** (10.2%), **Region XII** (8.4%) and **Region III** (8.3%).

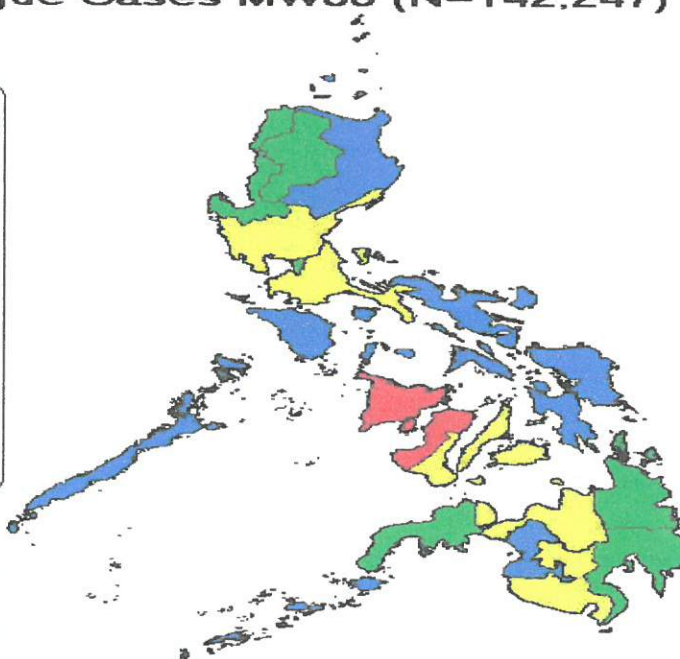
Fig. 3 Suspect Dengue Cases by Region Philippines, 2016 vs 2015 (N=142,247)



Suspect Dengue Cases MW38 (N=142,247)

Region	Cases
I	5894
II	3165
III	11852
IVA	14778
IVB	2689
V	1583
VI	19994
VII	14556
VIII	3859
IX	5253
X	10765
XI	9807
XII	11934
ARMM	2319
CAR	8357
CARAGA	5516
NCR	9926
PHILIPPINES	142247

Legend - Cases	
	1.00 - 5,000.00
	5,000.01 - 10,000.00
	10,000.01 - 15,000.00
	15,000.01 +





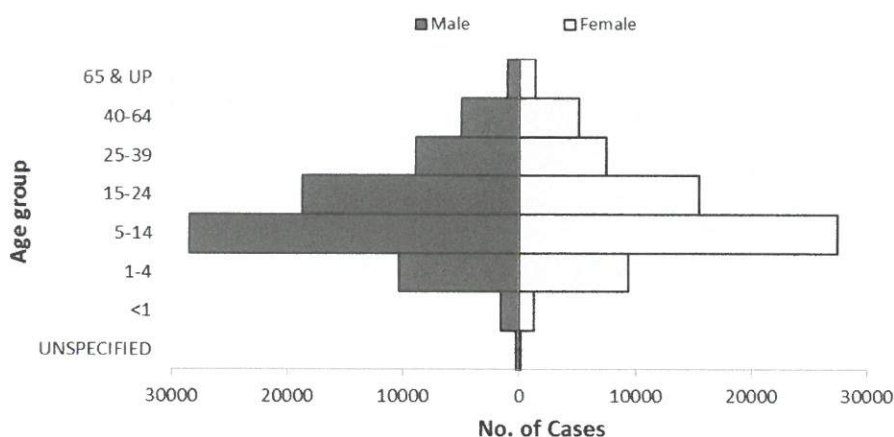
Morbidity Week 38 : January 1 – September 24, 2016

Epidemiology Bureau
Public Health Surveillance Division

Profile of Cases

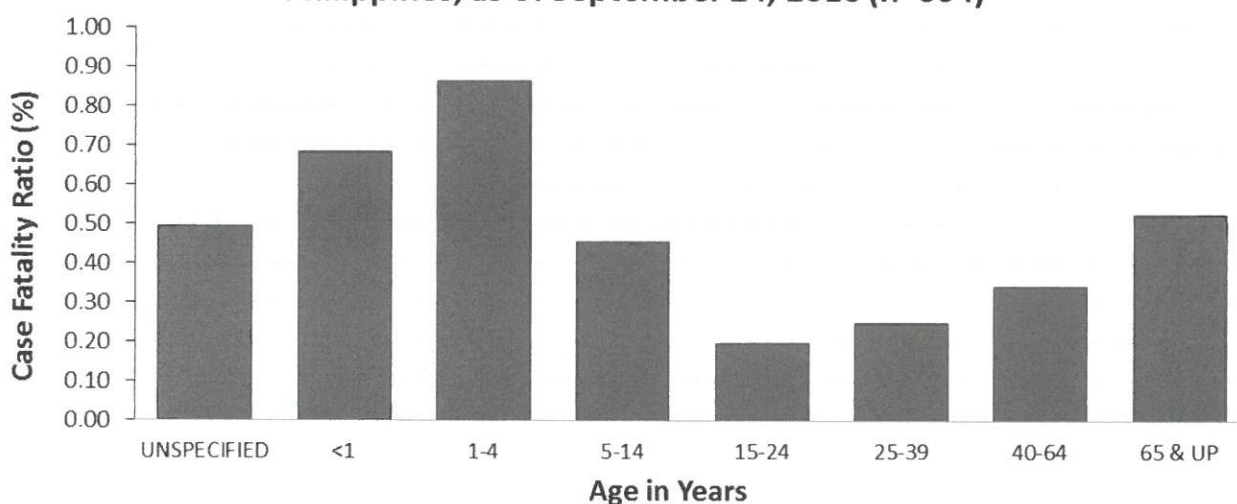
Ages of cases ranged from less than 1 month to 100 years old (median = 13 years). Majority of cases were male (52.3%). Most (39.2%) of the cases belonged to the 5 to 14 years age group.

**Fig.4 Suspect Dengue Cases by Age Group and Sex
Philippines, as of September 24, 2016 (N= 142,247)**



There were 604 deaths (CFR = 0.42%) reported. The age group that has the highest CFR is 1 to 4 years old (0.86%).

**Fig. 5 Suspect Dengue Case Fatality Rate (CFR) by Age Group,
Philippines, as of September 24, 2016 (n=604)**





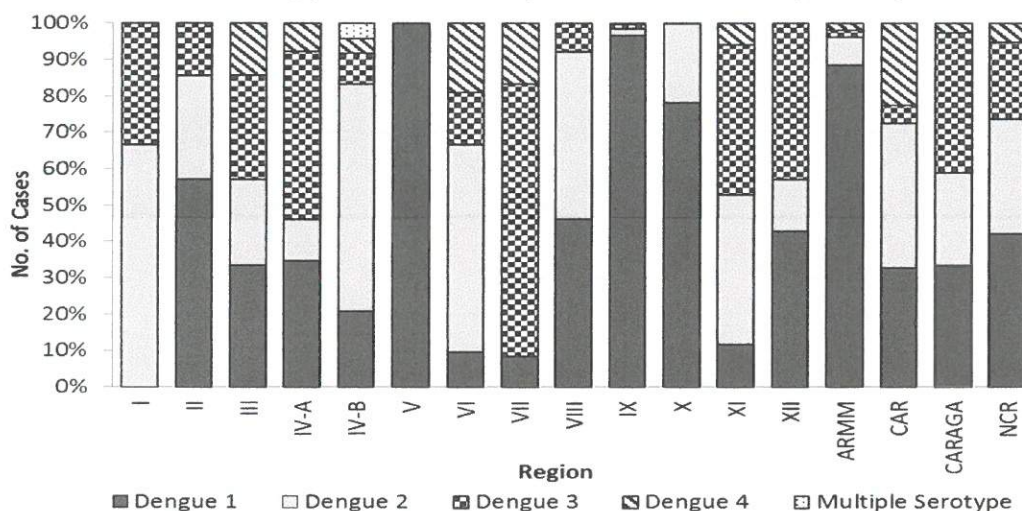
Morbidity Week 38 : January 1 – September 24, 2016

Epidemiology Bureau
Public Health Surveillance Division

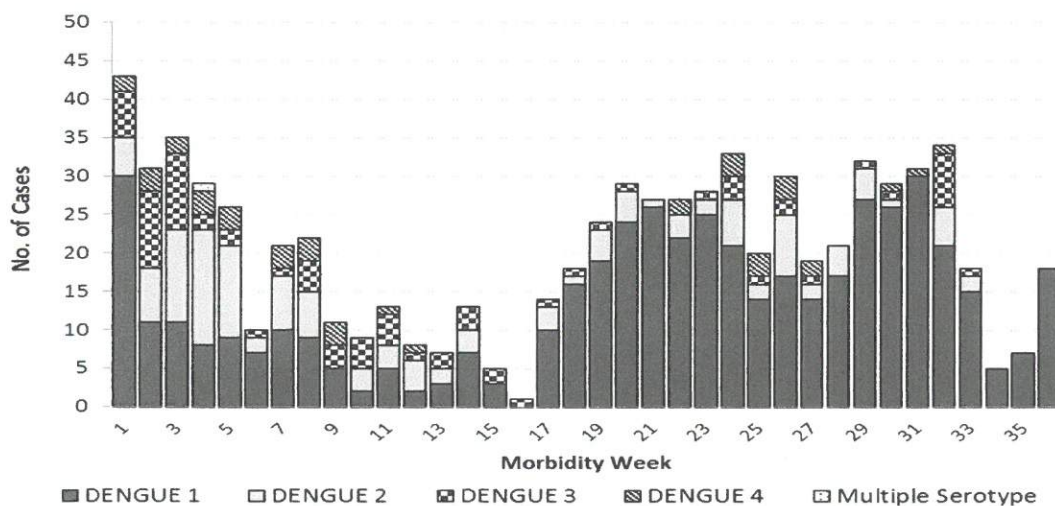
Dengue Virus Serotype Distribution in the Philippines

There were **728** laboratory confirmed dengue cases in the Philippines, in which all four DENV serotypes were present. The predominant serotype is **DENV-1** (66.3%) followed by **DENV-2** (17.8%). Most of the confirmed cases were from **Region IX** (49.3%).

**Fig. 6 Dengue Virus Serotype by Region
Philippines, as of September 24, 2016 (n=728)**



**Fig. 7 Dengue Virus Serotype by Morbidity Week
Philippines, as of September 24, 2016 (n=728)**





Morbidity Week 38 : January 1 – September 24, 2016

Epidemiology Bureau
Public Health Surveillance Division

Table 1. Dengue Cases & Deaths by Region
Philippines, 2016* vs 2015

Region	Cases			Deaths			
	2016	2015	% Change	2016	CFR (%)	2015	CFR (%)
I	5894	12012	↓ -50.9	12	0.20	29	0.24
II	3165	10650	↓ -70.3	5	0.16	14	0.13
III	11852	19712	↓ -39.9	29	0.24	23	0.12
IV-A	14778	18527	↓ -20.2	53	0.36	73	0.39
IV-B	2689	2788	↓ -3.6	13	0.48	9	0.32
V	1583	1292	↑ 22.5	12	0.76	7	0.54
VI	19994	6466	↑ 209.2	60	0.30	17	0.26
VII	14556	6424	↑ 126.6	115	0.79	36	0.56
VIII	3859	1081	↑ 257.0	23	0.60	4	0.37
IX	5253	5469	↓ -3.9	23	0.44	17	0.31
X	10765	6772	↑ 59.0	32	0.30	29	0.43
XI	9807	3195	↑ 206.9	70	0.71	11	0.34
XII	11934	6685	↑ 78.5	48	0.40	16	0.24
ARMM	2319	822	↑ 182.1	27	1.16	9	1.09
CAR	8357	6978	↑ 19.8	20	0.24	8	0.11
CARAGA	5516	3470	↑ 59.0	27	0.49	21	0.61
NCR	9926	15229	↓ -34.8	35	0.35	66	0.43
Total	142247	127572	↑ 11.5	604	0.42	389	0.30

Table 2. Weekly Dengue Summary Report by Region
Philippines, as of September 24, 2016

Region	Morbidity Week				38th Morbidity Week		Cumulative Total 1st wk to 38th wk	
	34	35	36	37	2016	2015	2016	2015
I	399	327	343	117	8	675	5894	12012
II	221	155	108	32	8	566	3165	10650
III	677	776	687	293	21	1733	11852	19712
IV-A	724	780	608	535	183	1675	14778	18527
IV-B	183	119	47	41	22	182	2689	2788
V	59	96	82	58	11	64	1583	1292
VI	1819	1493	951	535	16	388	19994	6466
VII	986	799	492	375	87	487	14556	6424
VIII	112	98	54	27	1	32	3859	1081
IX	174	185	136	60	8	151	5253	5469
X	477	243	270	347	134	221	10765	6772
XI	478	388	348	206	1	99	9807	3195
XII	561	431	360	82	2	209	11934	6685
ARMM	81	42	50	35	3	17	2319	822
CAR	360	240	140	36	3	381	8357	6978
CARAGA	153	148	83	40	0	156	5516	3470
NCR	644	662	521	482	109	1309	9926	15229
Total	8108	6982	5280	3301	617	8345	142247	127572

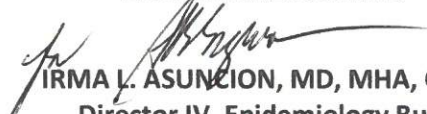
*NOTE: Case counts reported here do NOT represent the final number and are subject to change after inclusion of delayed reports and review of cases.



Morbidity Week 38 : January 1 – September 24, 2016

Epidemiology Bureau
Public Health Surveillance Division

EDITORIAL BOARD


IRMA L. ASUNCION, MD, MHA, CESO IV
Director IV, Epidemiology Bureau


VITO G. ROQUE, JR., MD, PHSAE
Division Chief PHSD


Allan P. Ignacio
Statistician II


June Cantata B. Corpuz, RN
PIDSR Program Manager


Jezza Johan D. Crucena, RN
VPD National Coordinator