



Hand, Foot and Mouth Disease Cases

Morbidity Week 26 : June 26-July 2, 2016

Epidemiology Bureau
Public Health Surveillance Division

Trend in the Philippines

This report summarizes PIDSR HFMD surveillance activities nationwide. A total of **433** suspect hand, foot and mouth disease cases were reported nationwide from January 1 to July 2, 2016. This is **49.77%** lower compared to the same time period last year (**862**).

Fig. 1 Suspect Hand, Foot and Mouth Disease Cases by Morbidity Week
Philippines, 2013-2016* (N=433)

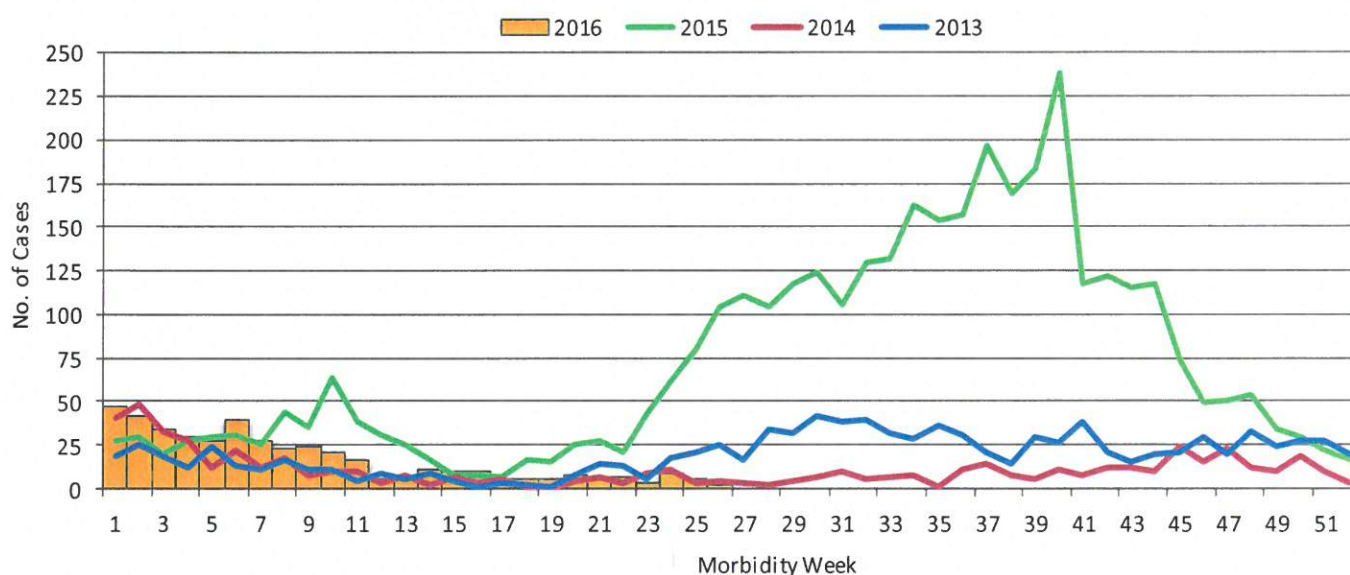
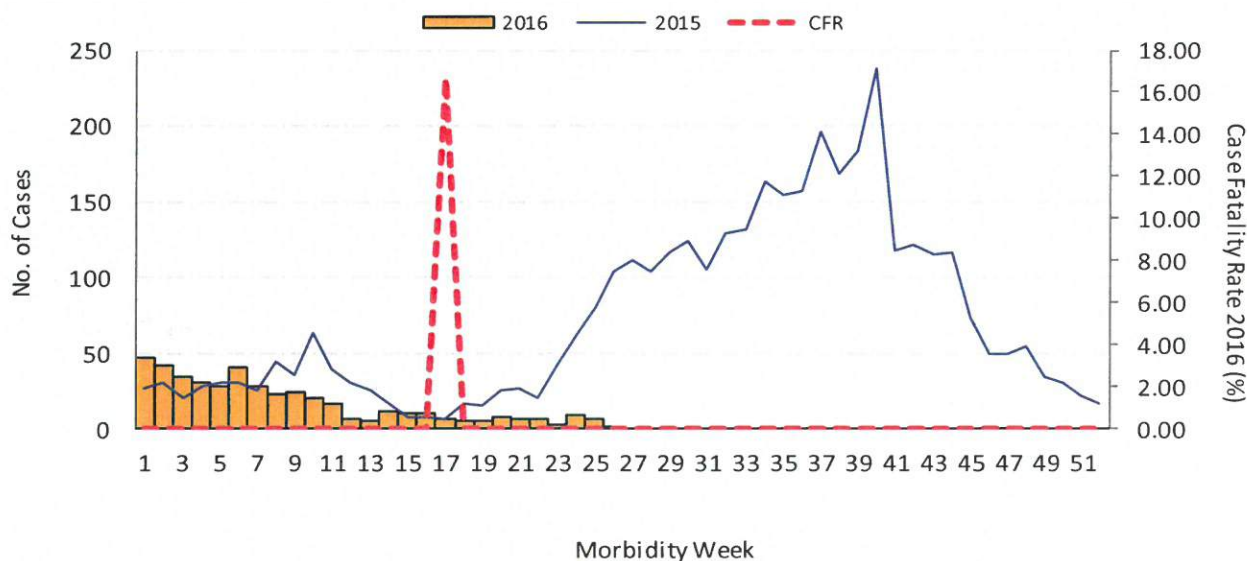


Fig. 2 Suspect Hand, Foot and Mouth Disease Cases by Morbidity Week,
Philippines, as of July 2, 2016
2016* vs 2015 (N=433)





Hand, Foot and Mouth Disease Cases

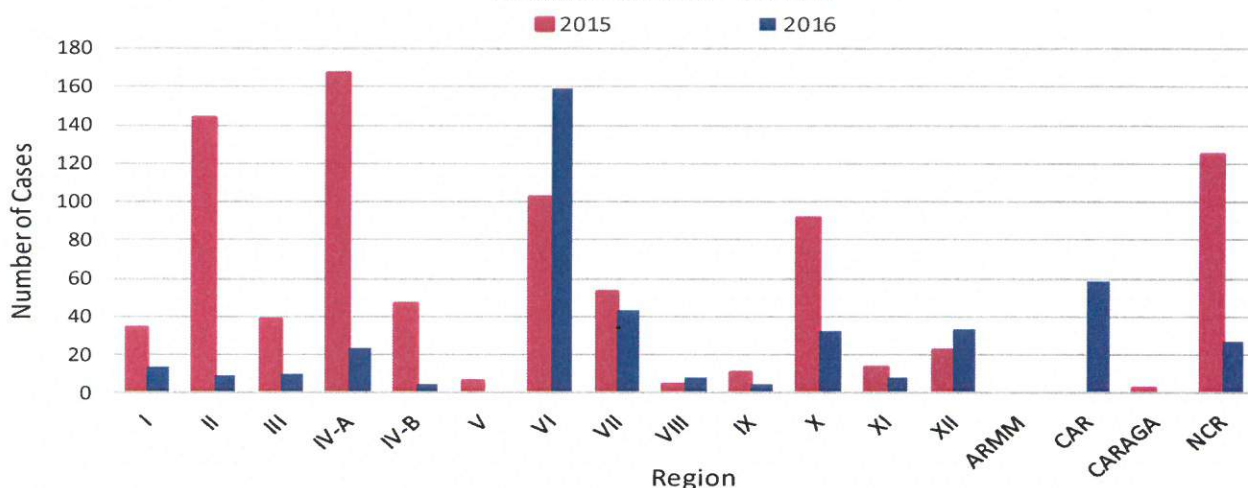
Morbidity Week 26 : June 26-July 2, 2016

Epidemiology Bureau
Public Health Surveillance Division

Geographic Distribution

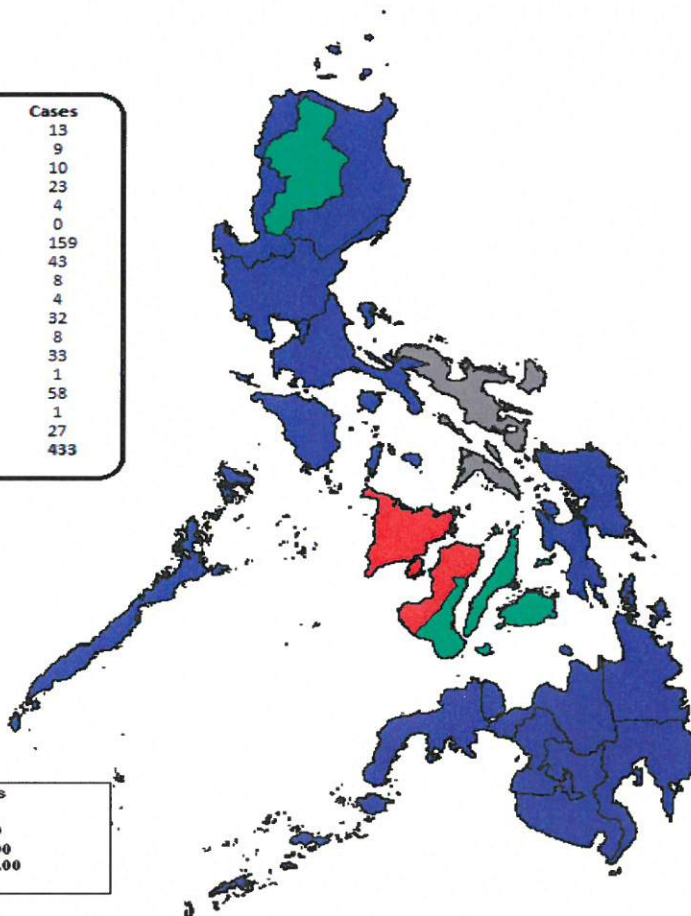
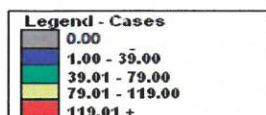
Most of the cases were from the following regions: **Region VI** (36.7 %), **CAR** (13.4%), **Region VII** (10%), **Region XII** (7.6%) and **Region X** (7.4%) (Fig.3).

Fig. 3 Suspect Hand, Foot and Mouth Disease Cases by Region
Philippines, 2016* vs 2015



Suspect Hand, Foot and Mouth Disease Cases MW26

Region	Cases
I	13
II	9
III	10
IVA	23
IVB	4
V	0
VI	159
VII	43
VIII	8
IX	4
X	32
XI	8
XII	33
ARMM	1
CAR	58
CARAGA	1
NCR	27
PHILIPPINES	433





Hand, Foot and Mouth Disease Cases

Morbidity Week 26 : June 26-July 2, 2016

Epidemiology Bureau
Public Health Surveillance Division

Profile of Cases

Ages of cases ranged from less than 1 month to 54 years old (median= 2 years). Majority of cases were male (61.7%). Most of the cases belonged to the 1 to 4 years age group (72.3%) (Fig. 4). There was one reported death of a suspect HFMD case from NCR (CFR=0.23%). No specimen collection was done.

Fig. 4 Suspect Hand, Foot and Mouth Disease by Agegroup and Sex
Philippines, as of July 2, 2016 (N=433)

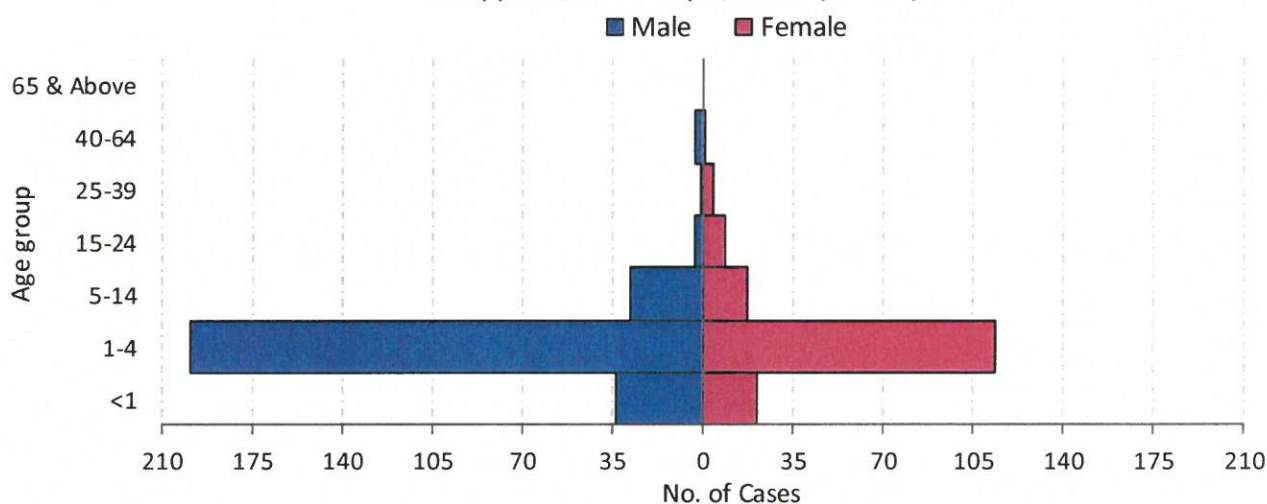
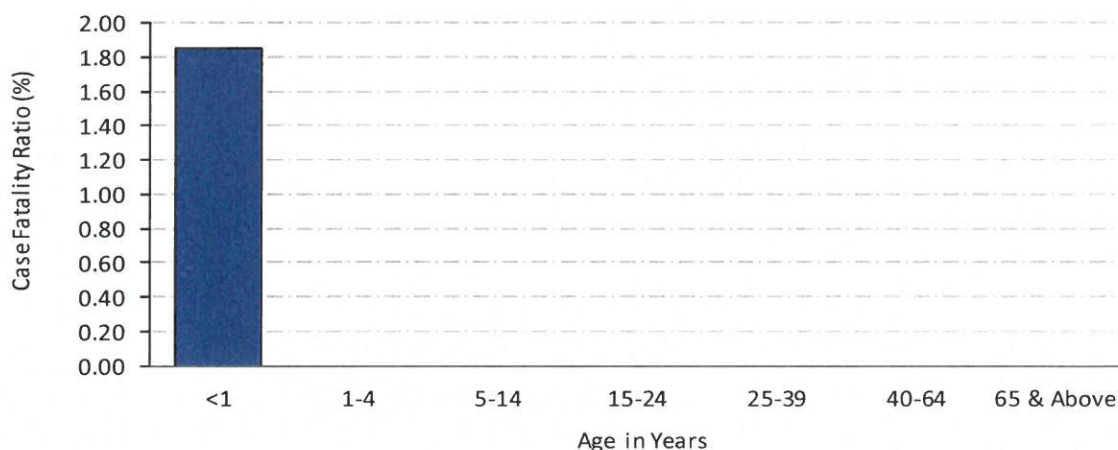


Fig. 5 Suspect Hand, Foot and Mouth Disease Case Fatality Rate (CFR) by Age Group,
Philippines, as of July 2, 2016



*NOTE: Case counts reported here do NOT represent the final number and are subject to change after inclusion of delayed reports and review of cases.



Hand, Foot and Mouth Disease Cases

Morbidity Week 26 : June 26-July 2, 2016

Epidemiology Bureau
Public Health Surveillance Division

HFMD Enterovirus Genus Distribution in the Philippines

Hand, foot, and mouth disease enterovirus genus data are based on the samples collected from the suspected HFMD cases in all regions of the Philippines from January 1-July 2, 2016. Out of 433 reported cases of HFMD, 25 (5.8%) cases were tested and 408 (94.2%) cases were not. Of the tested cases, 12 (48%) cases were laboratory confirmed, and 13 (52%) cases were negative for enterovirus (Fig.6). Out of the confirmed HFMD cases, *Coxsackievirus A6*(CA6) (41.7%), *Coxsackievirus A16*(CA16) (41.7%), and *Enterovirus* (EV) (16.7%) were detected.

Fig.6 Number of Specimens Collected for HFMD
Philippines, as of July 2, 2016 (N=25)

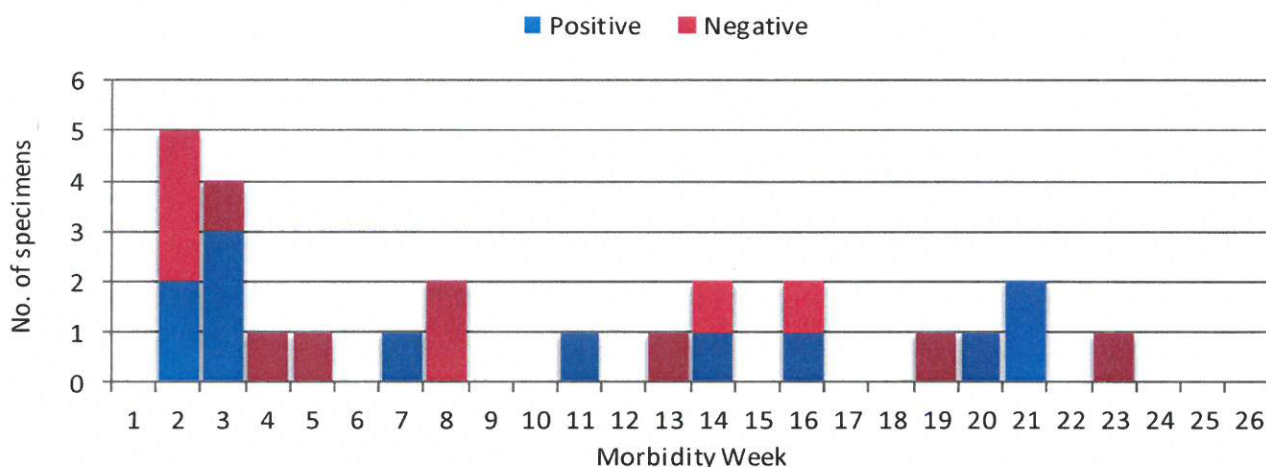
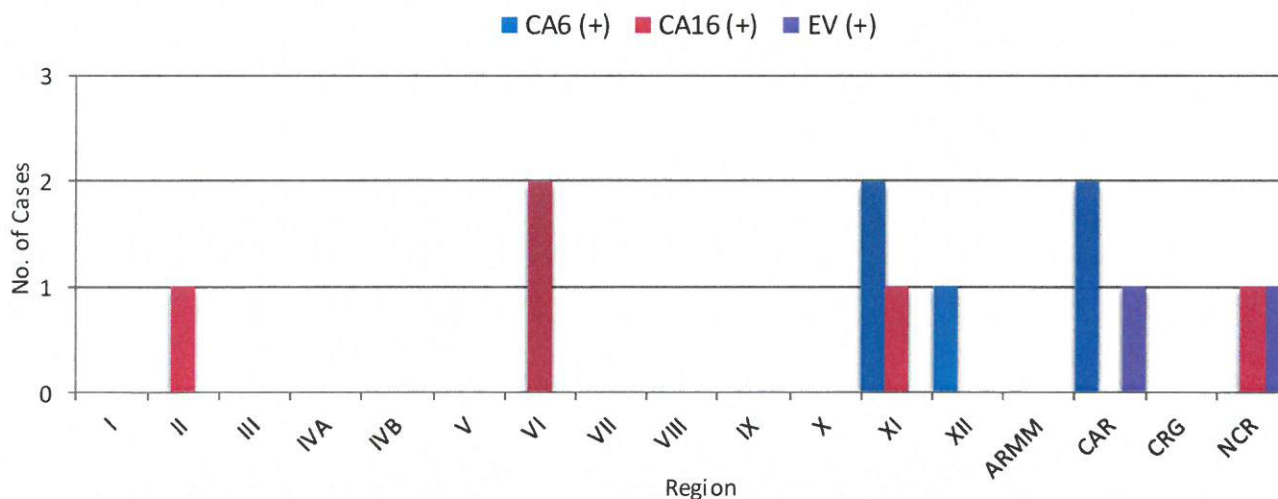


Fig. 7 Confirmed HFMD cases by Region and Enterovirus Genus
Philippines, as of July 2, 2016 (n=12)



*NOTE: Case counts reported here do NOT represent the final number and are subject to change after inclusion of delayed reports and review of cases.



Hand, Foot and Mouth Disease Cases

Morbidity Week 26 : June 26-July 2, 2016

Epidemiology Bureau
 Public Health Surveillance Division

Table 1. Suspect Hand, Foot and Mouth Disease Cases & Deaths by Region
Philippines, 2016* vs 2015

Region	Cases			Deaths			
	2016	2015	% Change	2016	CFR (%)	2015	CFR (%)
I	13	34	-61.76	0	0.00	0	0.00
II	9	144	-93.75	0	0.00	0	0.00
III	10	39	-74.36	0	0.00	0	0.00
IV-A	23	167	-86.23	0	0.00	0	0.00
IV-B	4	47	-91.49	0	0.00	0	0.00
V	0	6	-100.00	0	0.00	0	0.00
VI	159	102	55.88	0	0.00	0	0.00
VII	43	53	-18.87	0	0.00	0	0.00
VIII	8	4	100.00	0	0.00	0	0.00
IX	4	11	-63.64	0	0.00	0	0.00
X	32	92	-65.22	0	0.00	0	0.00
XI	8	13	-38.46	0	0.00	0	0.00
XII	33	22	50.00	0	0.00	0	0.00
ARMM	1	0	0.00	0	0.00	0	0.00
CAR	58	0	0.00	0	0.00	0	0.00
CARAGA	1	3	-66.67	0	0.00	0	0.00
NCR	27	125	-78.40	1	3.70	1	0.80
Total	433	862	-49.77	1	0.23	1	0.12

Table 2. Weekly Suspect Hand, Foot and Mouth Disease Summary Report by Region
Philippines, as of July 2, 2016

Region	Morbidity Week				26th Morbidity Week		Cumulative Total	
	22	23	24	25	2016	2015	1st wk to 26th wk	
I	0	0	0	0	0	5	13	34
II	0	0	1	0	0	3	9	144
III	0	0	1	1	0	8	10	39
IV-A	3	0	1	0	0	24	23	167
IV-B	0	0	0	0	0	0	4	47
V	0	0	0	0	0	3	0	6
VI	0	0	0	1	0	21	159	102
VII	0	0	1	0	0	17	43	53
VIII	0	0	0	0	0	0	8	4
IX	0	0	1	0	0	0	4	11
X	3	0	2	3	2	2	32	92
XI	0	0	2	0	0	2	8	13
XII	1	1	0	0	0	0	33	22
ARMM	0	0	0	0	0	0	1	0
CAR	0	0	0	0	0	0	58	0
CARAGA	0	0	0	0	0	0	1	3
NCR	0	2	0	1	0	19	27	125
Total	7	3	9	6	2	104	433	862



Hand, Foot and Mouth Disease Cases

Morbidity Week 26 : June 26-July 2, 2016


Epidemiology Bureau
Public Health Surveillance Division

EDITORIAL BOARD


IRMA L. ASUNCION, MD, MHA, CESO IV
Director IV, Epidemiology Bureau


VITO G. ROQUE, JR., MD, PHSAE
Division Chief PHSD

Allan P. Ignacio
Statistician II


June B. Corpuz, RN
PIDSR Program Manager


Jezza Jonah D. Crucena, RN
VPD Program Manager