



Morbidity Week 33: January-August 20, 2016

Epidemiology Bureau  
Public Health Surveillance Division

## Trend in the Philippines

This report summarizes PIDSR ILI surveillance activities nationwide. A total of **67,358** Influenza-like Illness cases were reported nationwide from January 1 to August 20, 2016. This is **9.5%** lower compared to the same time period last year (**74,421**).

Fig. 1 Distribution of Influenza-like Illness Cases by Morbidity Week  
Philippines, as of August 20, 2016 (N=67,358)

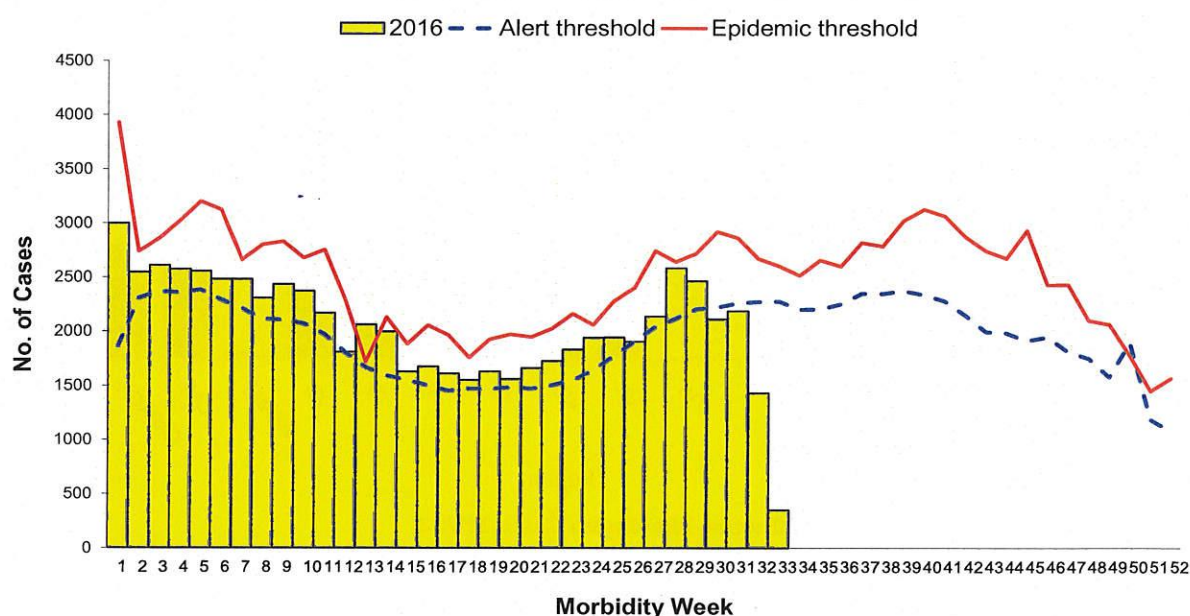
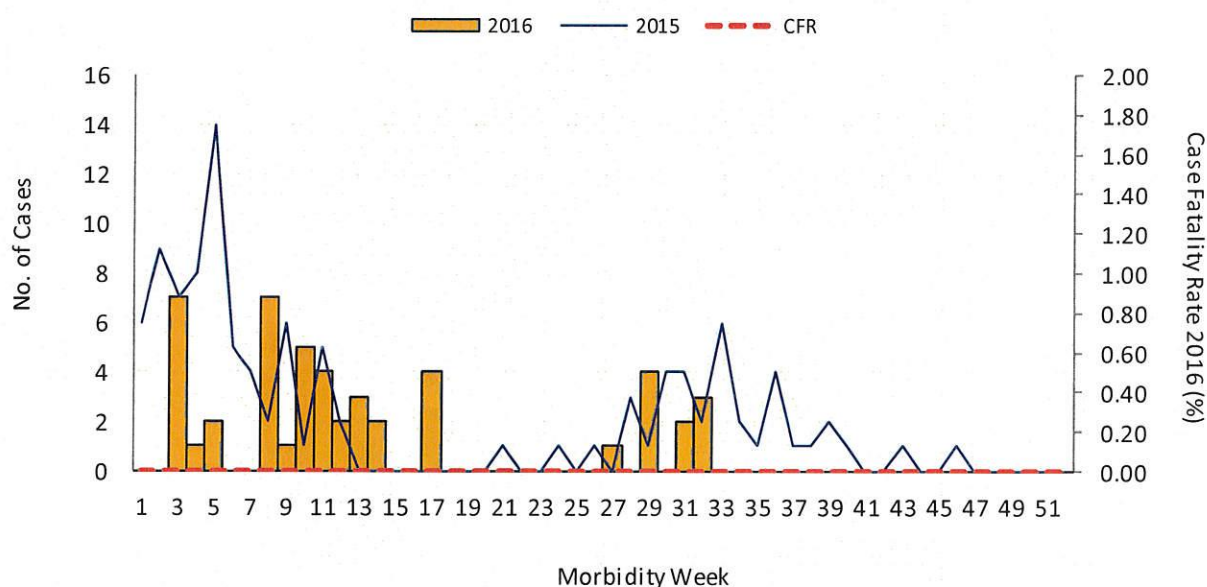


Fig. 2 Influenza Cases by Morbidity Week,  
Philippines, as of August 20, 2016  
2016\* vs 2015 (n=48)

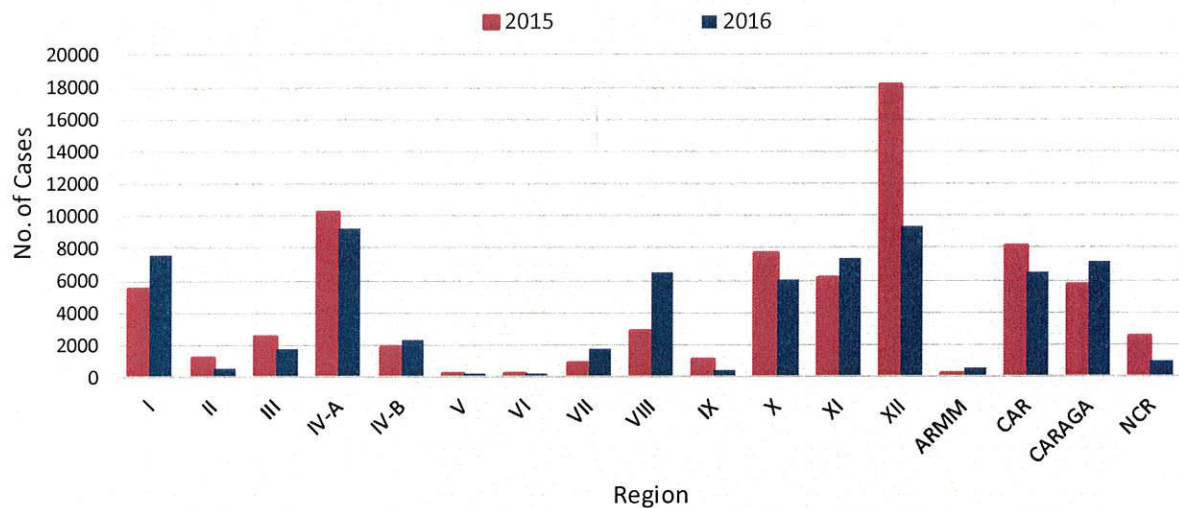




## Geographic Distribution

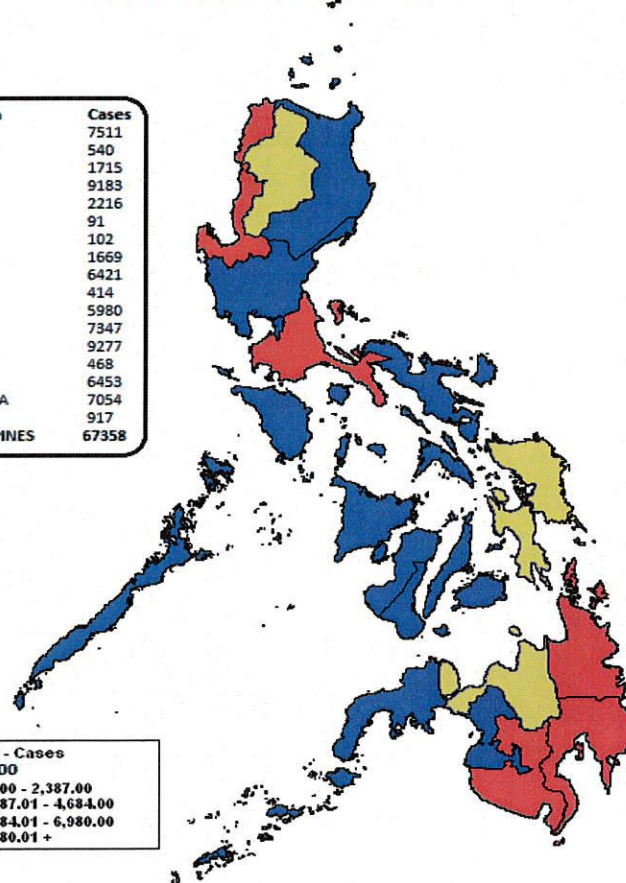
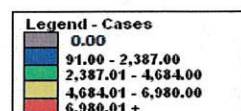
Most of the cases were from the following regions: **Region XII** (13.8%), **Region IVA** (13.6%), **Region I** (11.2%), **Region XI** (11%) and **CARAGA** (10.5%) (Fig. 3).

Fig.3 Influenza-like Illness Cases by Region  
 Philippines, 2016\* vs 2015



Influenza-like Illness Cases MW33

Region	Cases
I	7511
II	540
III	1715
IVA	9183
IVB	2216
V	91
VI	102
VII	1669
VIII	6421
IX	414
X	5980
XI	7347
XII	9277
ARMM	468
CAR	6453
CARAGA	7054
NCR	917
PHILIPPINES	67358







Morbidity Week 33: January-August 20, 2016

Epidemiology Bureau  
Public Health Surveillance Division

## Profile of Cases

Ages of cases ranged from less than 1 month to 100 years old (median= 6 years). Majority of cases were male (50.7%). Most of the cases belonged to the 1 to 4 years age group (29.3%) (Fig. 4). There were 12 reported deaths (CFR=0.02%) (Fig. 5).

Fig. 4 Influenza-like Illness Cases by Agegroup and Sex  
Philippines, as of August 20, 2016 (N=67,358)

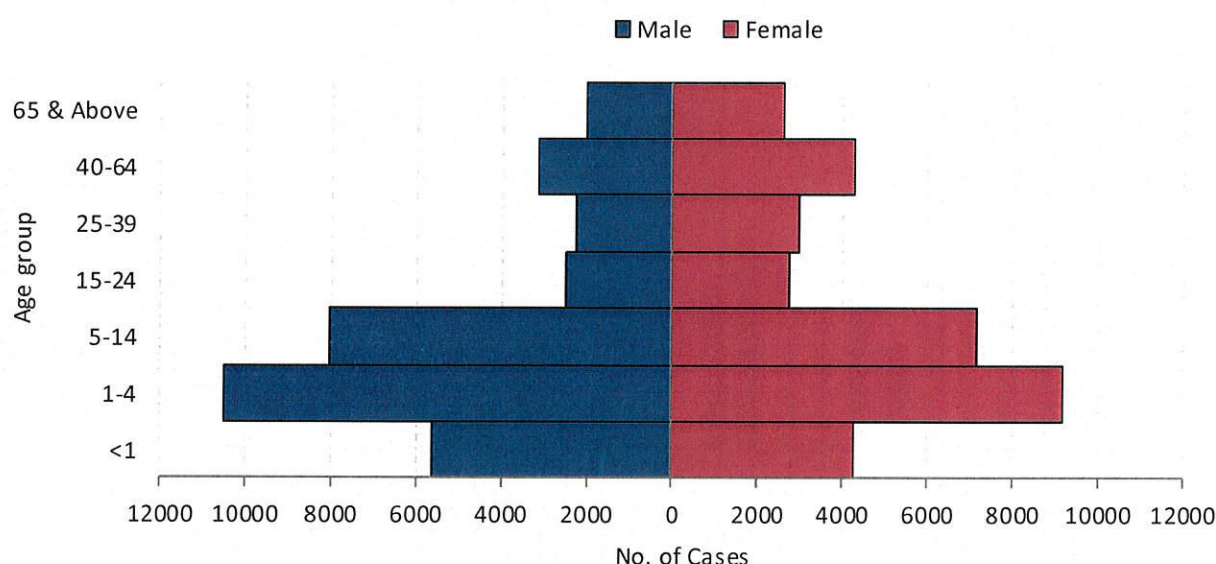
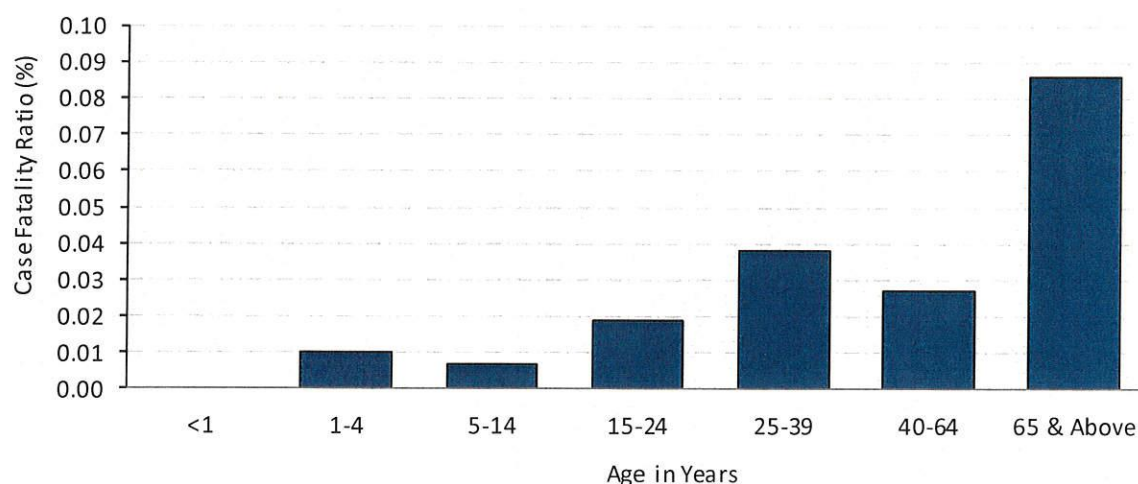


Fig. 5 Influenza-like Illness Case Fatality Rate (CFR) by Age Group,  
Philippines, as of August 20, 2016



*\*NOTE: Case counts reported here do NOT represent the final number and are subject to change after inclusion of delayed reports and review of cases.*



Morbidity Week 33: January-August 20, 2016

Epidemiology Bureau  
Public Health Surveillance Division

### Distribution of Influenza Type in the Philippines

Influenza type data are based on the samples collected from the suspected Influenza cases in all regions of the Philippines. Out of 67,358 cases, 1670 (2.5%) cases were tested. Of the tested cases, 1622 (97.1%) yielded negative, and 48 (2.9%) were laboratory confirmed Influenza cases (Fig. 6). Out of the confirmed cases, (58.3%) were *Influenza A (H1N1) pdm09*, (33.3%) were *Influenza B*, (6.3%) *Influenza A (H3)* and (2.1%) *Parainfluenza 1* (Fig.7).

Fig.6 Number of Specimens Collected for Influenza  
Philippines, as of August 20, 2016 (N=1,670)

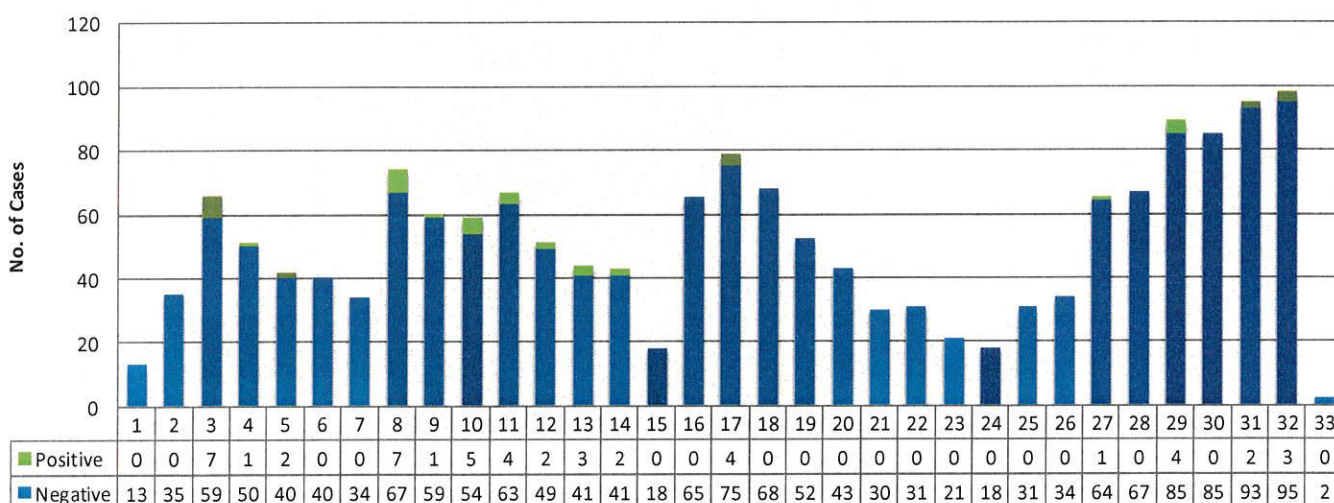
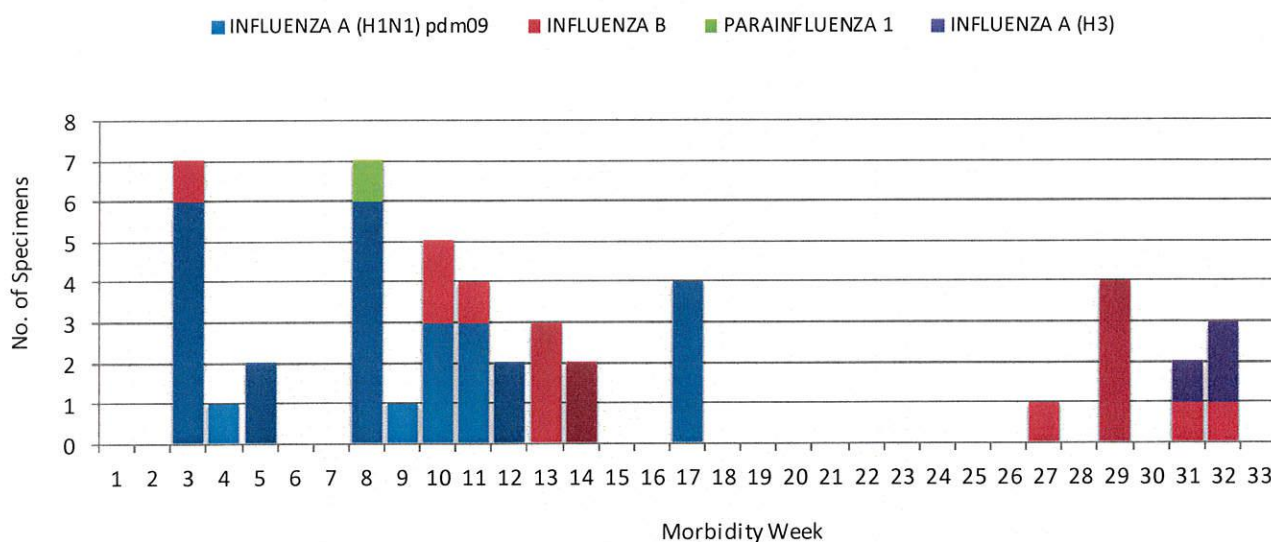


Fig. 7 Number of Specimens Positive for Influenza by Subtype  
Philippines, as of August 20, 2016 (n=48)



\*NOTE: Case counts reported here do NOT represent the final number and are subject to change after inclusion of delayed reports and review of cases.





Morbidity Week 33: January-August 20, 2016

Epidemiology Bureau  
 Public Health Surveillance Division

**Table 1. Influenza-like Illness Cases & Deaths by Region**  
 Philippines, 2016\* vs 2015

Region	Cases			Deaths			
	2016	2015	% Change	2016	CFR (%)	2015	CFR (%)
I	7511	5488	36.9	1	0.01	3	0.05
II	540	1129	-52.2	0	0.00	0	0.00
III	1715	2507	-31.6	0	0.00	0	0.00
IV-A	9183	10135	-9.4	0	0.00	0	0.00
IV-B	2216	1791	23.7	1	0.05	0	0.00
V	91	84	8.3	0	0.00	0	0.00
VI	102	142	-28.2	0	0.00	0	0.00
VII	1669	834	100.1	1	0.06	0	0.00
VIII	6421	2832	126.7	0	0.00	0	0.00
IX	414	1038	-60.1	0	0.00	0	0.00
X	5980	7701	-22.3	0	0.00	2	0.03
XI	7347	6093	20.6	1	0.01	13	0.21
XII	9277	18158	-48.9	1	0.01	1	0.01
ARMM	468	165	183.6	0	0.00	0	0.00
CAR	6453	8142	-20.7	0	0.00	0	0.00
CARAGA	7054	5713	23.5	7	0.10	5	0.09
NCR	917	2469	-62.9	0	0.00	0	0.00
<b>Total</b>	<b>67358</b>	<b>74421</b>	<b>-9.5</b>	<b>12</b>	<b>0.02</b>	<b>24</b>	<b>0.03</b>

**Table 2. Weekly Influenza-like Illness Summary Report by Region**  
 Philippines, as of August 20, 2016

Region	Morbidity Week				33rd Morbidity Week		Cumulative Total	
	29	30	31	32	2016	2015	1st wk to 33rd wk	
					2016	2015	2016	2015
I	285	234	319	220	6	191	7511	5488
II	5	5	4	9	3	46	540	1129
III	59	20	6	1	0	106	1715	2507
IV-A	422	362	449	380	179	264	9183	10135
IV-B	119	163	198	104	29	109	2216	1791
V	13	0	8	6	0	0	91	84
VI	2	6	10	3	0	0	102	142
VII	58	101	83	76	41	14	1669	834
VIII	217	133	101	66	8	121	6421	2832
IX	8	2	3	0	1	7	414	1038
X	237	278	326	167	50	190	5980	7701
XI	230	281	312	227	10	251	7347	6093
XII	440	252	138	29	5	502	9277	18158
ARMM	27	11	9	9	2	0	468	165
CAR	209	176	141	86	11	355	6453	8142
CARAGA	101	7	10	8	2	169	7054	5713
NCR	32	83	71	39	7	44	917	2469
<b>Total</b>	<b>2464</b>	<b>2114</b>	<b>2188</b>	<b>1430</b>	<b>354</b>	<b>2369</b>	<b>67358</b>	<b>74421</b>



Morbidity Week 33: January-August 20, 2016

Epidemiology Bureau  
Public Health Surveillance Division

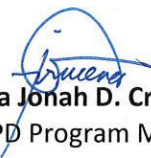
### EDITORIAL BOARD

  
IRMA L. ASUNCION, MD, MHA, CESO IV  
Director IV, Epidemiology Bureau

  
VITO G. ROQUE, JR., MD, PHSAE  
Division Chief PHSD

  
Allan P. Ignacio  
Statistician II

  
June B. Corpuz, RN  
PIDSR Program Manager

  
Jezza Jonah D. Crucena, RN  
VPD Program Manager