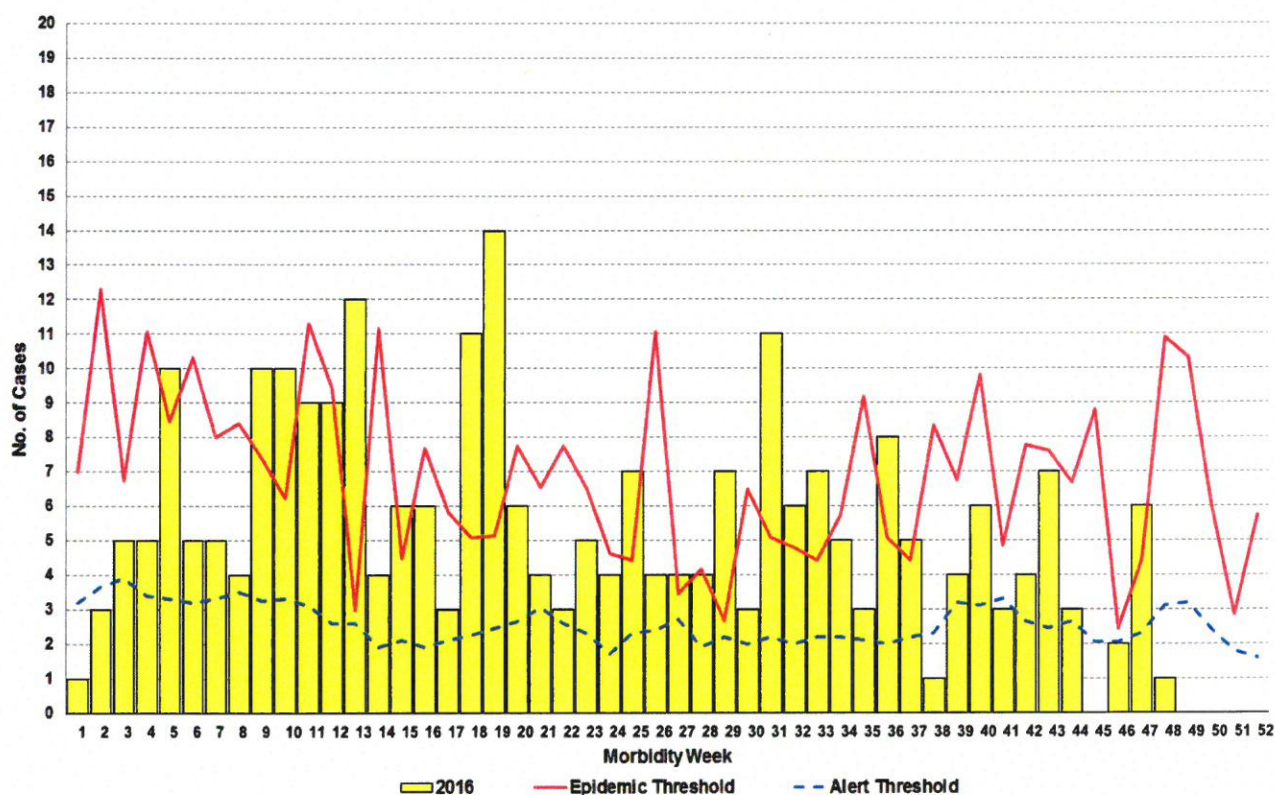




TRENDS IN THE PHILIPPINES

A total of **265** pertussis cases were reported nationwide from January 1 – December 3, 2016. This is **65.63% higher** than the same period last year. Figure 1 shows the distribution of the reported pertussis cases in the country by morbidity week, with cases reaching beyond the epidemic threshold last morbidity week 47. From last month's surveillance report, 3 additional cases from Region IV-A was confirmed as pertussis.

Fig. 1 Alert and Epidemic Threshold and Reported Pertussis Cases by Morbidity Week, Philippines, as of December 3, 2016 (N=265)



GEOGRAPHIC DISTRIBUTION

The number of pertussis cases varies by region. Figure 2 shows the distribution of reported pertussis cases by region in comparison to the same time period last year. Majority of the cases came from Region 11 (64 cases). An increase in reported cases can also be seen in regions 1, 2, 3, 4A, CARAGA and NCR.

Table 1 indicates the reported pertussis cases by region in the Philippines. Majority of the reported pertussis cases came from Region XI. There are several cities/municipalities that reported 2 or more pertussis cases from January 1 – December 3, 2016 as shown in Table 2. Majority of the reported cases are from **Davao City** and **Quezon City**. No new cluster⁽¹⁾ of pertussis cases identified within the past 4 Morbidity Weeks.

⁽¹⁾Cluster Definition: 2 or more pertussis cases from the same barangay, reported within 4 consecutive weeks.



Fig. 2 Reported Pertussis Cases by Region, Philippines, as of December 3, 2016 (N=265)

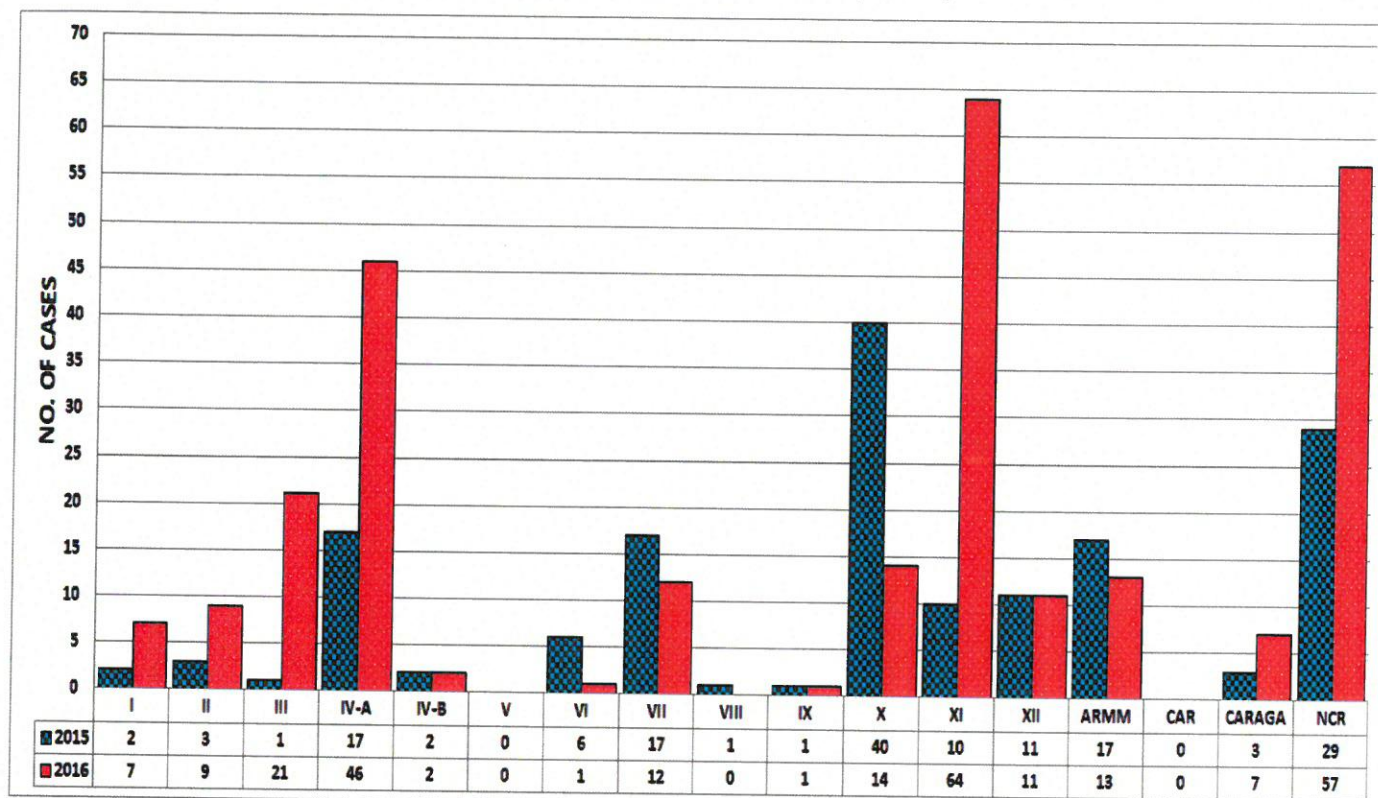


Table 1. Reported Pertussis Cases by Region, Philippines, as of December 3, 2016 (N=265)

REGION	Case Classification			Total Reported Cases	Died	CFR %
	Clinically-Confirmed Cases	Probable Cases	Confirmed Cases			
I	4	1	2	7	2	28.57
II	9	0	0	9	0	0.00
III	20	0	1	21	3	14.29
IV-A	41	0	5	46	5	10.87
IV-B	2	0	0	2	0	0.00
V	0	0	0	0	0	-
VI	1	0	0	1	0	0.00
VII	12	0	0	12	0	0.00
VIII	0	0	0	0	0	-
IX	1	0	0	1	0	0.00
X	14	0	0	14	0	0.00
XI	52	0	12	64	2	3.13
XII	11	0	0	11	1	9.09
ARMM	13	0	0	13	0	0.00
CAR	0	0	0	0	0	-
CARAGA	7	0	0	7	1	14.29
NCR	53	0	4	57	2	3.51
PHL	240	1	24	265	16	6.04



Morbidity Week 48: January 1 – December 3, 2016

Epidemiology Bureau
Public Health Surveillance Division

Table 2. Cities/ Municipalities with 2 or more Reported Pertussis Cases,
Philippines, as of December 3, 2016

REGION	PROVINCE	CITY/ MUNICIPALITY	NO. OF CASES
I	PANGASINAN	MANGALDAN	2
II	CAGAYAN	ALCALA	2
	NUEVA VIZCAYA	KASIBU	2
III	BATAAN	ORANI	2
	PAMPANGA	BACOLOR	2
		MAGALANG	3
		MEXICO	2
		SAN FERNANDO CITY	5
IV-A	CAVITE	BACOR	6
		DASMARIÑAS	3
		GEN. MARIANO ALVAREZ	2
		SILANG	2
		TANZA	2
		BIÑAN	2
	LAGUNA	SAN PEDRO	2
		SANTA ROSA	2
	QUEZON	LUCENA CITY	5
	RIZAL	ANTIPOLO CITY	6
		CAINTA	2
		RODRIGUEZ	2
IV-B	ORIENTAL MINDORO	SAN MATEO	3
VII	CEBU	VICTORIA	2
		CEBU CITY	2
		MINGLANILLA	2
X	BUKIDNON	MANOLO FORTICH	2
	LANAO DEL NORTE	ILIGAN CITY	4
	MISAMIS ORIENTAL	CAGAYAN DE ORO CITY	2
XI	DAVAO DEL NORTE	TAGUM CITY	2
	DAVAO DEL SUR	DAVAO CITY	55
		SANTA CRUZ	3
XII	SULTAN KUDARAT	ISULAN	3
		SEN. NINOY AQUINO	3
ARMM	LANAO DEL SUR	DITSAAN-RAMAIN	2
		MARAWI CITY	2
CARAGA	AGUSAN DEL NORTE	BUTUAN CITY	2
	AGUSAN DEL SUR	PROSPERIDAD	2
NCR	METRO MANILA	CALOOCAN CITY	5
		LAS PIÑAS CITY	4
		MANILA	5
		MUNTINLUPA CITY	3
		PARAÑAQUE CITY	4
		PASAY CITY	2
		PASIG CITY	2
		QUEZON CITY	26



Morbidity Week 48: January 1 – December 3, 2016

Epidemiology Bureau
Public Health Surveillance Division

PROFILE OF CASES

As shown in figure 3, we have **130 males and 135 females** most of them belong to the **<1 year old age group** that will be **79.25%** of the total cases. More than half of the reported cases (Figure 4) were not administered with any dose of DPT/PENTA valent vaccine (56.98%). Sixteen (6%) of the reported pertussis cases have **died** (Figure 5).

Fig. 3 Reported Pertussis Cases by Age Group and Sex, Philippines, as of December 3, 2016 (N=265)

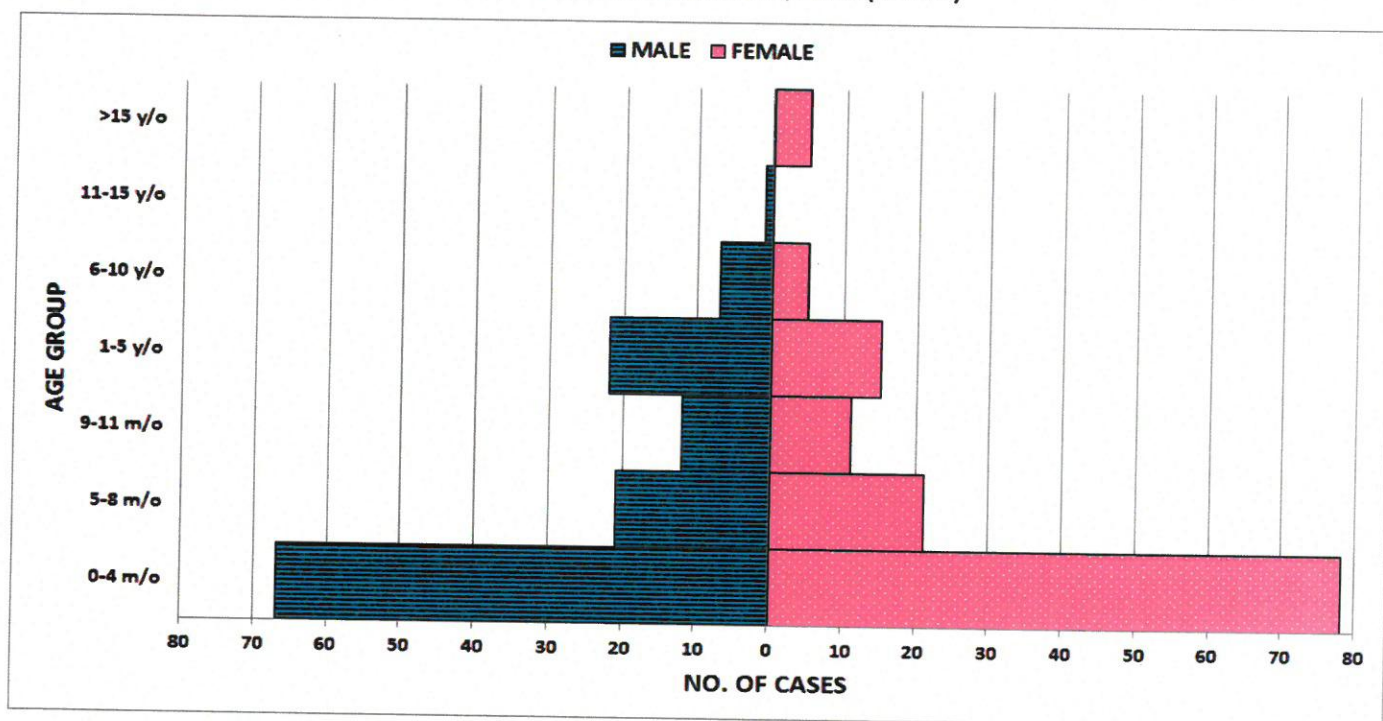
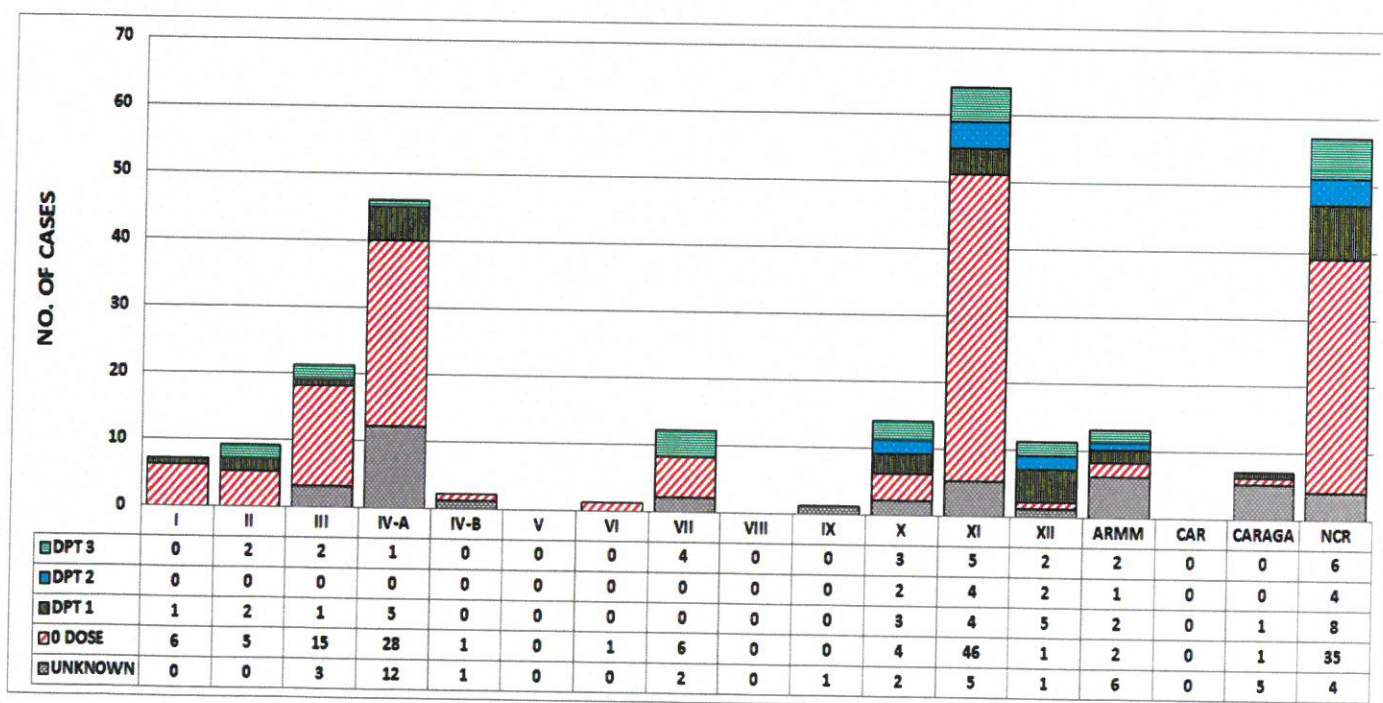


Fig. 4 Reported Pertussis Cases by DPT Doses and Region, Philippines, as of December 3, 2016 (N=265)

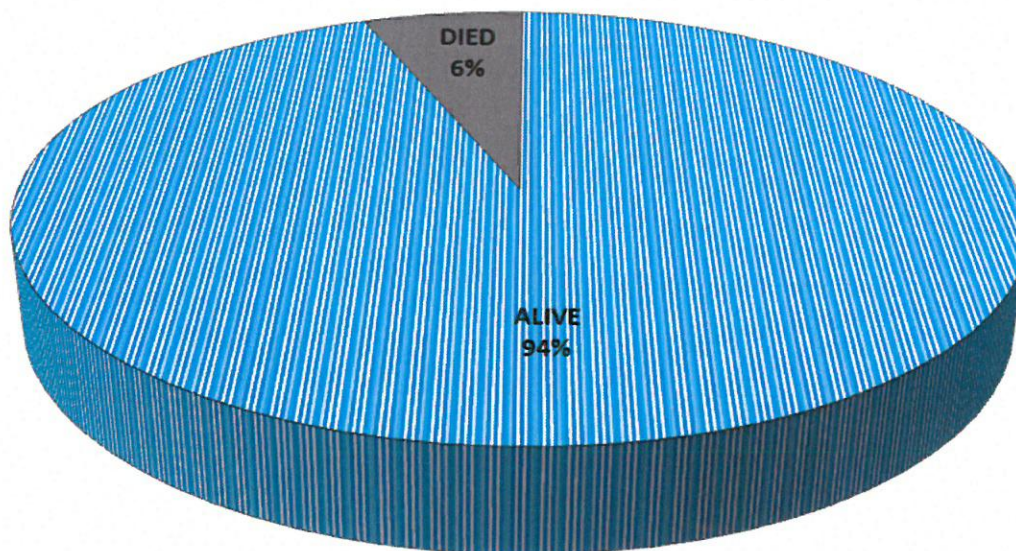




Morbidity Week 48: January 1 – December 3, 2016

Epidemiology Bureau
Public Health Surveillance Division

Fig. 5 Reported Pertussis Cases by Outcome, Philippines, as of December 3, 2016 (N=265)



Standard Case Definition of Pertussis

• **Clinical Case:**

- A person with a cough lasting at least 2 weeks with at least one of the following:
 - paroxysms (i.e. fits) of coughing
 - inspiratory “whooping”
 - post-tussive vomiting (i.e. vomiting immediately after coughing)
 - without other apparent cause

Case classification

• **Clinically-confirmed case:**

- A case that meets the clinical case definition but is not laboratory confirmed.

• **Probable case:**

- Meets the clinical case definition, is not laboratory confirmed, and is not epidemiologically linked to a laboratory-confirmed case.

• **Laboratory-confirmed case:**

- A case of acute cough illness of any duration with a positive culture for *B. pertussis*; OR
- A case that meets the clinical case definition and is confirmed by PCR; OR
- A case that meets the clinical definition and is epidemiologically linked directly to a case confirmed by either culture or PCR.

Editorial Board

IRMA L. ASUNCION, MD, MHA, CESO IV
Director IV, Epidemiology Bureau

GENESIS J. SAMONTE, MD, MSc, PHSAE
OIC-Division Chief, PHSD

JUNE CANTATA B. CORPUZ, RN
Nurse III, PIDSR National Coordinator

JEZZA JONAH D. CRUCENA, RN
Nurse III, VPDS National Coordinator

ALLAN P. IGNACIO
Statistician II, PHSD