



January 1 - April 1, 2017

Epidemiology Bureau
Public Health Surveillance Division

Trend in the Philippines

This report summarizes PIDS ILI surveillance activities nationwide. A total of **12,743** Influenza-like Illness cases were reported nationwide from January 1 to April 1, 2017. This is **64.2%** lower compared to the same time last year (**35,640**).

Fig. 1 Distribution of Influenza-like Illness Cases by Morbidity Week
Philippines, as April 1, 2017 (N=12,743)

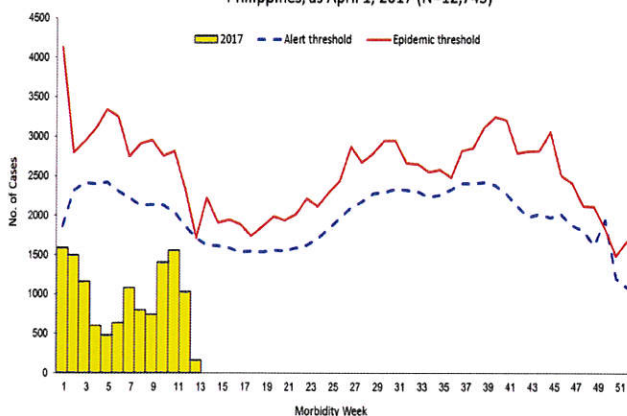
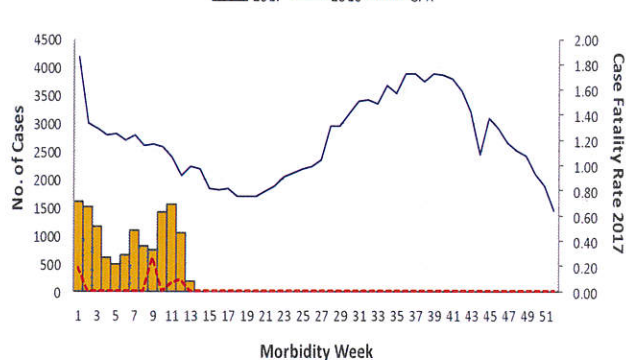


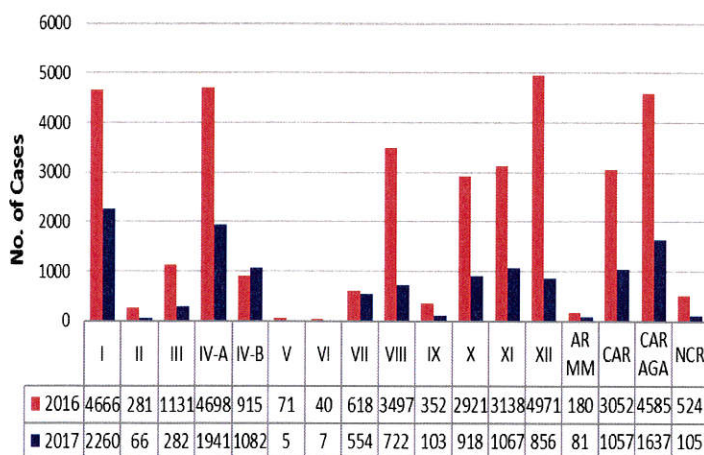
Fig. 2 Influenza Cases by Morbidity Week,
Philippines, as of April 1, 2017
2017* vs 2016 (N=12,743)



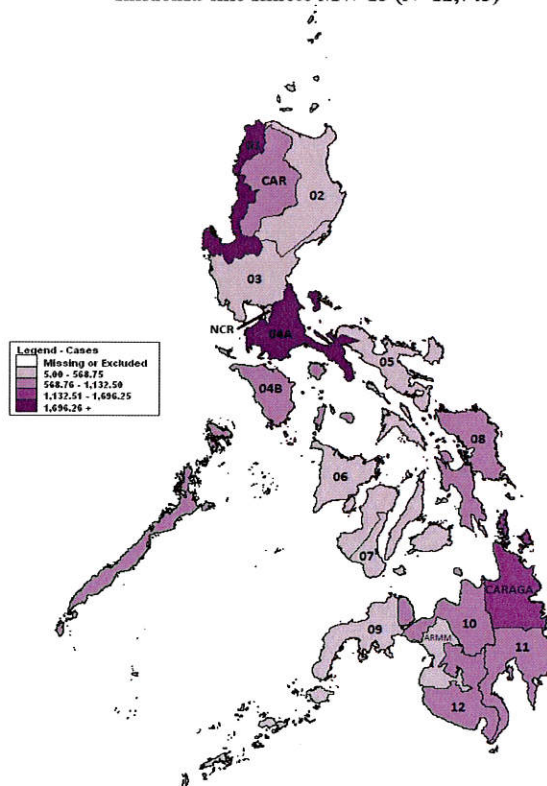
Geographic Distribution

Most of the cases were from the following regions: **Region I** (17.74%), **Region IV-A** (15.23%), **Region CARAGA** (12.85%), **Region IV-B** (8.49%), and **Region XI** (8.37%) (Fig. 3)

Fig.3 Influenza-like Illness Cases by Region
Philippines, 2017* vs 2016,



Influenza-like Illness MW 13 (N=12,743)



*NOTE: Case counts reported here do NOT represent the final number and are subject to change after inclusion of delayed reports and review of cases.



January 1 - April 1, 2017

Epidemiology Bureau
Public Health Surveillance Division

Profile of Cases

Ages of cases ranged from less than 1 month to 100 years old. Majority of cases were male (50.7%). Most of the cases belonged to the 1 to 4 years' age group (32.36%) (Fig. 4). There were 7 reported deaths (CFR=0.05%) (Fig. 5).

Fig. 4 Influenza-like Illness Cases by Agegroup and Sex
Philippines, as of April 1, 2017 (N=12,743)

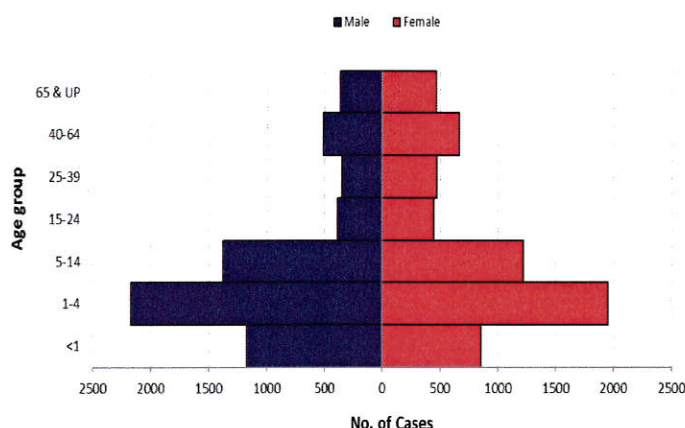


Fig. 5 Influenza-like Illness Case Fatality Rate (CFR) by Age Group,
Philippines, as of April 1, 2017

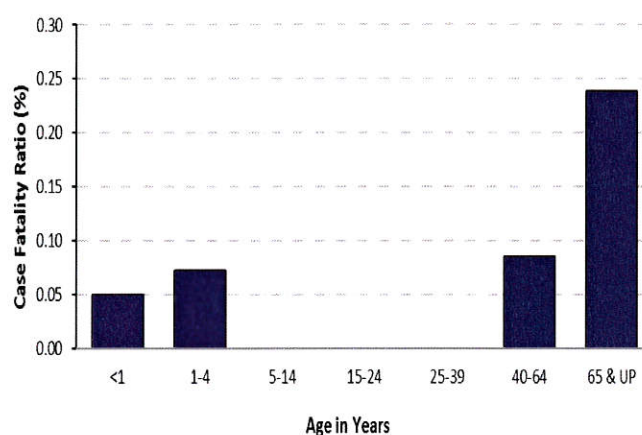


Table 1. Influenza-like Illness Cases & Deaths by Region
Philippines, 2017* vs 2016

Region	Cases			Deaths			
	2017	2016	% Change	2017	CFR (%)	2016	CFR (%)
I	2260	4666	-51.6	0	0.00	1	0.02
II	66	281	-76.5	0	0.00	1	0.36
III	282	1131	-75.1	0	0.00	0	0.00
IV-A	1941	4698	-58.7	2	0.10	0	0.00
IV-B	1082	915	18.3	0	0.00	1	0.11
V	5	71	-93.0	0	0.00	0	0.00
VI	7	40	-82.5	0	0.00	0	0.00
VII	554	618	-10.4	0	0.00	1	0.16
VIII	722	3497	-79.4	0	0.00	1	0.03
IX	103	352	-70.7	0	0.00	0	0.00
X	918	2921	-68.6	0	0.00	0	0.00
XI	1067	3138	-66.0	1	0.09	0	0.00
XII	856	4971	-82.8	0	0.00	1	0.02
ARMM	81	180	-55.0	0	0.00	0	0.00
CAR	1057	3052	-65.4	1	0.09	0	0.00
CARAGA	1637	4585	-64.3	3	0.18	5	0.11
NCR	105	524	-80.0	0	0.00	0	0.00
Total	12743	35640	-64.2	7	0.05	11	0.03


*NOTE: Case counts reported here do NOT represent the final number and are subject to change after inclusion of delayed reports and review of cases.



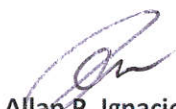
January 1 - April 1, 2017

Epidemiology Bureau
Public Health Surveillance Division

EDITORIAL BOARD


IRMA L. ASUNCION, MD, MHA, CESO IV
Director IV, Epidemiology Bureau


GENESIS MAY J. SAMONTE, MD, MSc, PHSAE
OIC-Division Chief PHSD


Allan P. Ignacio
Statistician II


June B. Corpuz, RN
PIDSR Program Manager


Jezza Jonah D. Crucena, RN
VPD Program Manager

