



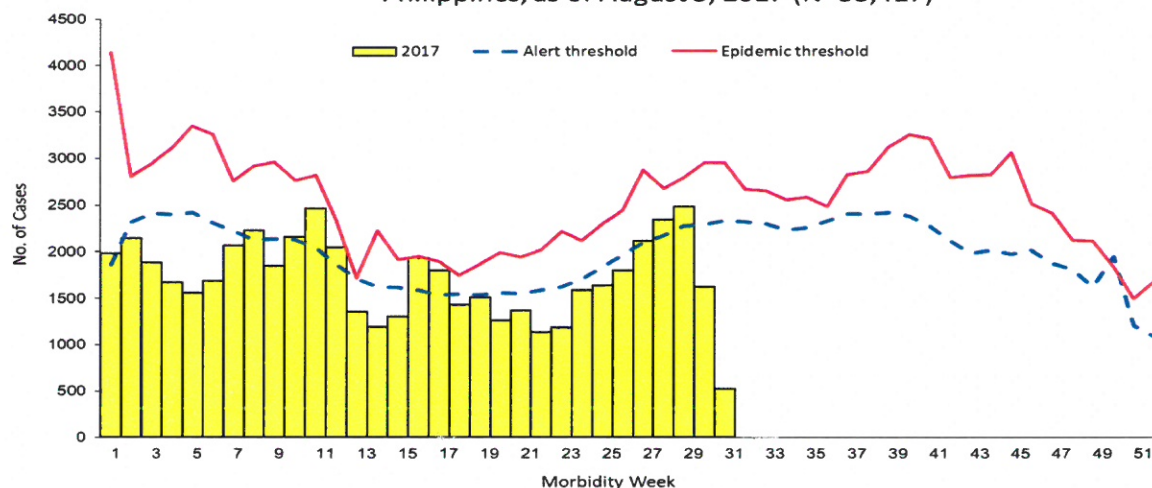
January 1 – August 5, 2017

Epidemiology Bureau
Public Health Surveillance Division

Trend in the Philippines

This report summarizes the Influenza-like Illness (ILI) surveillance activities nationwide. A total of **53,417** Influenza-like Illness cases were reported nationwide from January 1 to August 5, 2017. This is **29.2%** lower compared to the same time last year (**75,430**).

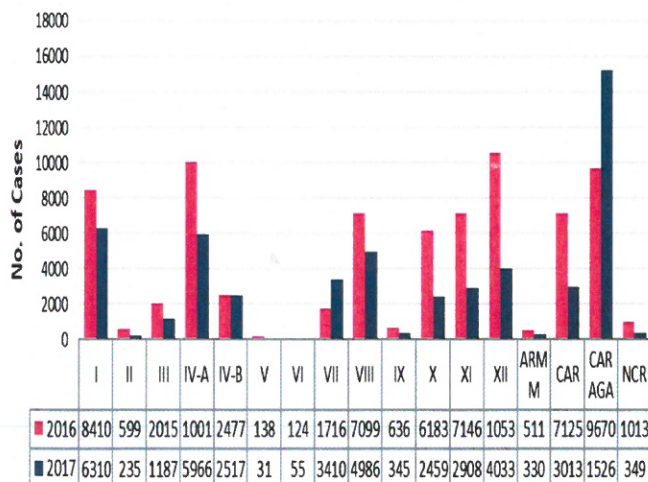
Fig. 1 Distribution of Influenza-like Illness Cases by Morbidity Week
Philippines, as of August 5, 2017 (N=53,417)



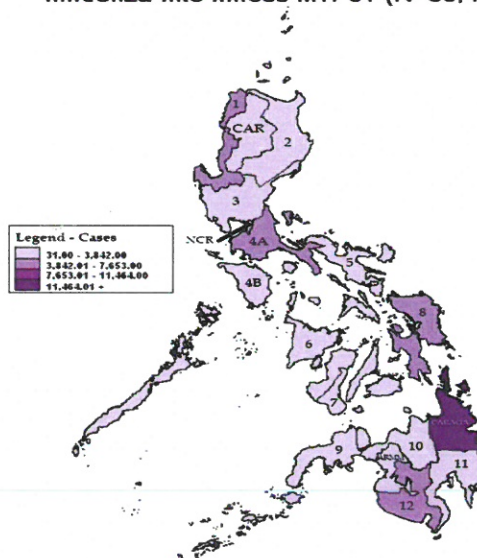
Geographic Distribution

Most of the cases were from the following regions: **CARAGA** (28.58%), **Region I** (11.82%), **Region IV-A** (11.17%), **Region VIII** (9.34%), and **Region XII** (7.55%) (Fig. 2)

Fig. 2 Influenza-like Illness Cases by Region
Philippines, 2017* vs 2016,



Influenza-like Illness MW 31 (N=53,417)



*NOTE: Case counts reported here do NOT represent the final number and are subject to change after inclusion of delayed reports and review of cases.



January 1 – August 5, 2017

Epidemiology Bureau
Public Health Surveillance Division

Profile of Cases

Ages of cases ranged from less than 1 month to 104 years old. Majority of cases were male (50.4%). Most of the cases belonged to the 1 to 4 years' age group (31.26%) (Fig. 3). There were 20 reported deaths (CFR=0.04%) (Fig. 4).

Fig. 3 Influenza-like Illness Cases by Agegroup and Sex
Philippines, as of August 5, 2017 (N=53,417)

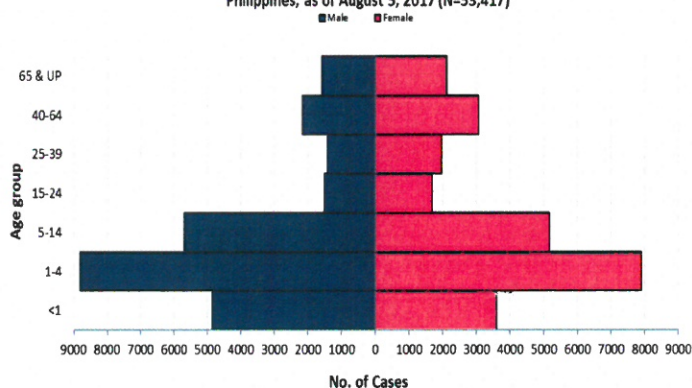


Fig. 4 Influenza-like Illness Case Fatality Rate (CFR) by Age Group,
Philippines, as of August 5, 2017

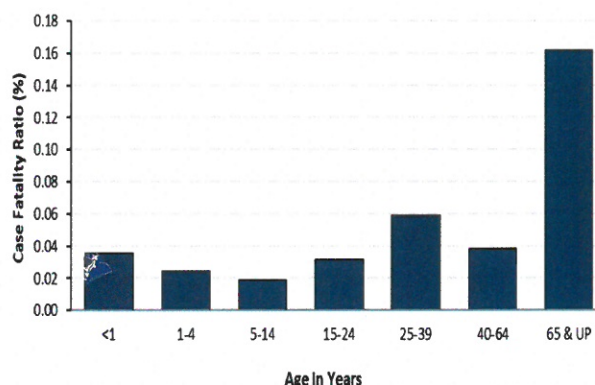


Table 1. Influenza-like Illness Cases & Deaths by Region
Philippines, 2017* vs 2016

Region	Cases			Deaths			
	2017	2016	% Change	2017	CFR (%)	2016	CFR (%)
I	6310	8410	↓ -25.0	0	0.00	1	0.01
II	235	599	↓ -60.8	0	0.00	1	0.17
III	1187	2015	↓ -41.1	0	0.00	0	0.00
IV-A	5966	10017	↓ -40.4	2	0.03	2	0.02
IV-B	2517	2477	→ 1.6	0	0.00	1	0.04
V	31	138	↓ -77.5	0	0.00	0	0.00
VI	55	124	↓ -55.6	0	0.00	0	0.00
VII	3410	1716	↑ 98.7	0	0.00	1	0.06
VIII	4986	7099	↓ -29.8	5	0.10	1	0.01
IX	345	636	↓ -45.8	0	0.00	0	0.00
X	2459	6183	↓ -60.2	0	0.00	0	0.00
XI	2908	7146	↓ -59.3	0	0.00	1	0.01
XII	4033	10530	↓ -61.7	0	0.00	2	0.02
ARMM	330	511	↓ -35.4	0	0.00	0	0.00
CAR	3013	7125	↓ -57.7	1	0.03	0	0.00
CARAGA	15263	9670	↑ 57.8	12	0.08	11	0.11
NCR	349	1013	↓ -65.5	0	0.00	0	0.00
Total	53,397	75,409	↓ -29.2	20	0.04	21	0.03

EDITORIAL BOARD

Irma L. Asuncion
IRMA L. ASUNCION, MD, MHA, CESO IV
Director IV, Epidemiology Bureau

Genesis May J. Samonte
GENESIS MAY J. SAMONTE, MD, MSc, PHSAE
OIC-Division Chief PHSD

Mariel A. Dejesa
MARIEL A. DEJESA, MD, MPM
Medical Officer IV, PHSD

June B. Corpuz
JUNE B. CORPUZ, RN
PIDSR Program Manager

Jezza Jonah D. Crucena
JEZZA JONAH D. CRUCENA, RN
VPD Program Manager

ALLAN P. IGNACIO
Statistician II

*NOTE: Case counts reported here do NOT represent the final number and are subject to change after inclusion of delayed reports and review of cases.