



January 1 – February 4, 2017

Epidemiology Bureau
Public Health Surveillance Division

Trend in the Philippines

This report summarizes PIDS ILI surveillance activities nationwide. A total of **5,227** Influenza-like Illness cases were reported nationwide from January 1 to February 4, 2017. This is **66.7%** lower compared to the same time last year (**15,684**)

Fig. 1 Distribution of Influenza-like Illness Cases by Morbidity Week
Philippines, as February 4, 2017 (N=5,227)

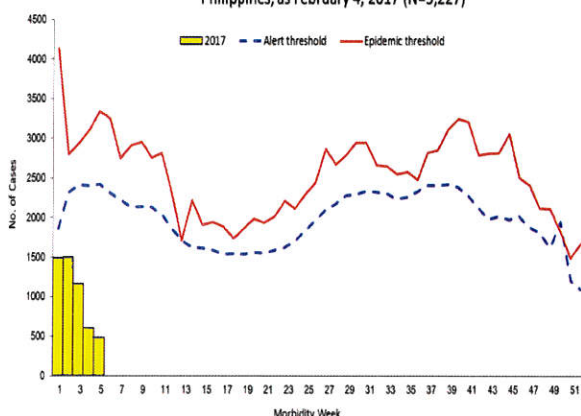
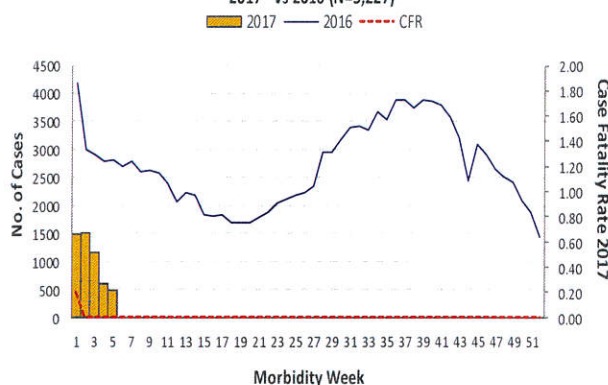


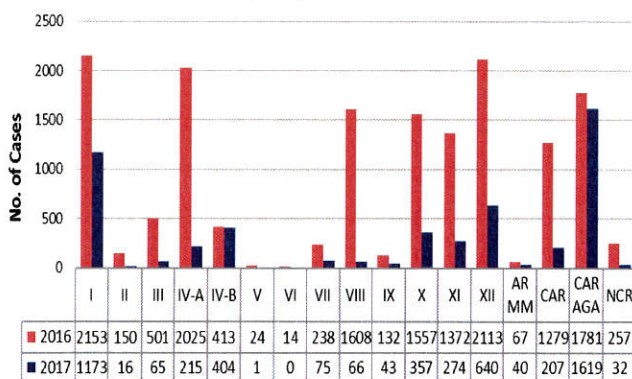
Fig. 2 Influenza Cases by Morbidity Week,
Philippines, as of February 4, 2017
2017* vs 2016 (N=5,227)



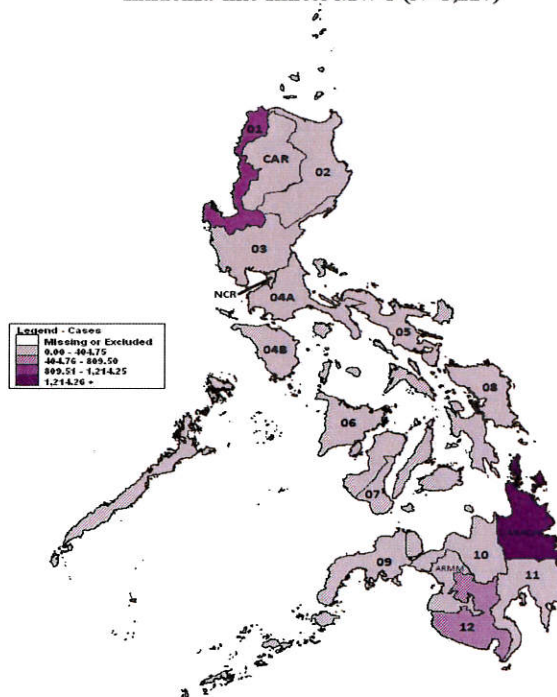
Geographic Distribution

Most of the cases were from the following regions:
Region CARAGA (30.97%), Region I (22.44%), Region XII (12.24%), Region IV-B (7.73%), and Region XII (6.83%) (Fig. 3)

Fig.3 Influenza-like Illness Cases by Region
Philippines, 2017* vs 2016,



Influenza-like Illness MW 5 (N=5,227)



*NOTE: Case counts reported here do NOT represent the final number and are subject to change after inclusion of delayed reports and review of cases.



January 1 – February 4, 2017

Epidemiology Bureau
Public Health Surveillance Division

Profile of Cases

Ages of cases ranged from less than 1 month to 100 years old. Majority of cases were female (50.2%). Most of the cases belonged to the 1 to 4 years' age group (30.55%) (Fig. 4). There were 3 reported deaths (CFR=0.06%) (Fig. 5).

Fig. 4 Influenza-like Illness Cases by Agegroup and Sex
Philippines, as of February 4, 2017 (N=5,227)

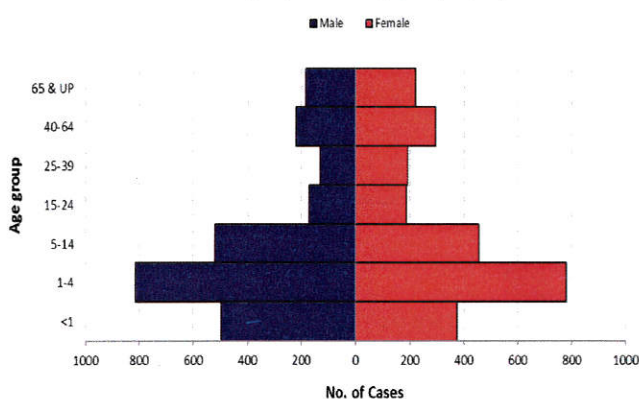


Fig. 5 Influenza-like Illness Case Fatality Rate (CFR) by Age Group,
Philippines, as of February 4, 2017

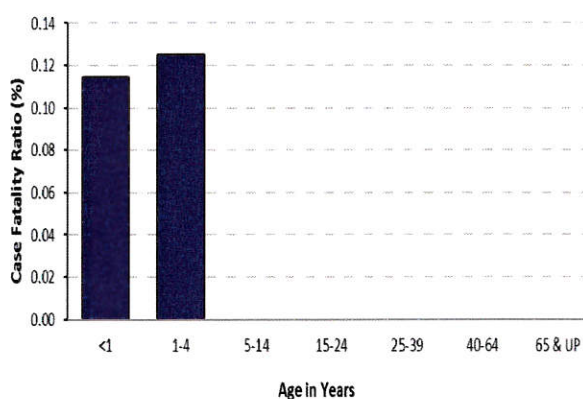


Table 1. Influenza-like Illness Cases & Deaths by Region
Philippines, 2017* vs 2016

Region	Cases			Deaths			
	2017	2016	% Change	2017	CFR (%)	2016	CFR (%)
I	1173	2153	-45.5	0	0.00	1	0.05
II	16	150	-89.3	0	0.00	0	0.00
III	65	501	-87.0	0	0.00	0	0.00
IV-A	215	2025	-89.4	0	0.00	0	0.00
IV-B	404	413	-2.2	0	0.00	1	0.24
V	1	24	-95.8	0	0.00	0	0.00
VI	0	14	-100.0	0	0.00	0	0.00
VII	75	238	-68.5	0	0.00	0	0.00
VIII	66	1608	-95.9	0	0.00	0	0.00
IX	43	132	-67.4	0	0.00	0	0.00
X	357	1557	-77.1	0	0.00	0	0.00
XI	274	1372	-80.0	0	0.00	0	0.00
XII	640	2113	-69.7	0	0.00	0	0.00
ARMM	40	67	-40.3	0	0.00	0	0.00
CAR	207	1279	-83.8	0	0.00	0	0.00
CARAGA	1619	1781	-9.1	3	0.19	1	0.06
NCR	32	257	-87.5	0	0.00	0	0.00
Total	5227	15684	-66.7	3	0.06	3	0.02

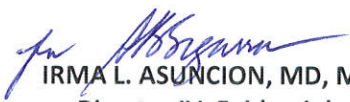
*NOTE: Case counts reported here do NOT represent the final number and are subject to change after inclusion of delayed reports and review of cases.



January 1 – February 4, 2017

Epidemiology Bureau
Public Health Surveillance Division

EDITORIAL BOARD


IRMA L. ASUNCION, MD, MHA, CESO IV
Director IV, Epidemiology Bureau


GENESIS MAY J. SAMONTE, MD, MSc, PHSAE
OIC-Division Chief PHSD


Allan P. Ignacio
Statistician II


June B. Corpuz, RN
PIDSR Program Manager


Jezza Jonah D. Crucena, RN
VPD Program Manager

