



Dengue Disease Surveillance Report



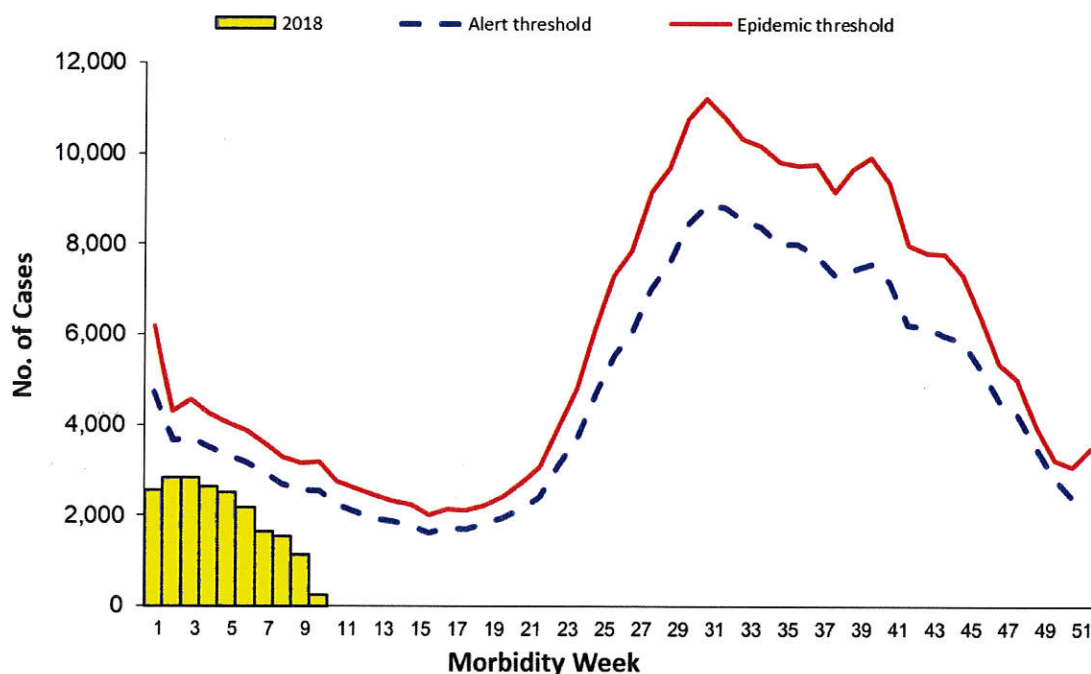
January 1 – March 10, 2018

Philippine Integrated Disease Surveillance and Response
Public Health Surveillance Division

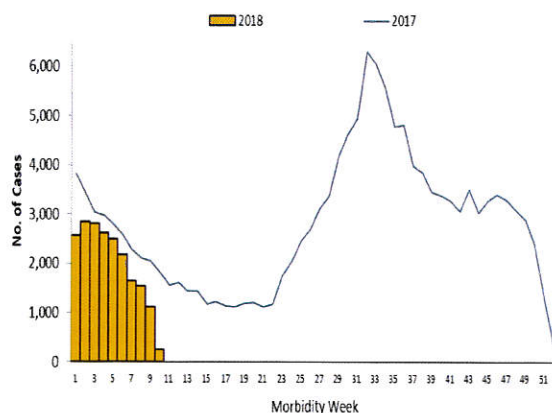
Trend in the Philippines

A total of **20,108** dengue cases were reported nationwide from January 1 to March 10, 2018 (Figures 1&2). This is **25.59%** lower compared to the same time period last year (**27,023**).

**Fig. 1 Reported Dengue Cases by Morbidity Week
Philippines, January 1 – March 10, 2018* (N=20,108)**



**Fig. 2 Reported Dengue Cases by Morbidity
Week Philippines, January 1- March 10, 2018
2018* vs 2017 (N=20,108)**



**Table 1. Reported Dengue Case Fatality Rate by
Morbidity Week, January 1- March 10, 2018
2018* vs 2017**

Morbidity Week	Cases 2018	Deaths 2018	CFR (%)	Cases 2017	Deaths 2017	CFR (%)
1	2,569	18	0.70	3,830	26	0.68
2	2,846	13	0.46	3,458	26	0.75
3	2,825	14	0.50	3,051	17	0.56
4	2,624	9	0.34	2,978	17	0.57
5	2,501	4	0.16	2,807	18	0.64
6	2,181	12	0.55	2,607	17	0.65
7	1,650	14	0.85	2,293	11	0.48
8	1,537	7	0.46	2,107	8	0.38
9	1,124	7	0.62	2,061	13	0.63
10	251	1	0.40	1,831	5	0.27
Total	20,108	99	0.49	27,023	158	0.58

*NOTE: Case counts reported here do NOT represent the final number and are subject to change after inclusion of delayed reports and review of cases. All 2017 data reflects partial data only of all Regions.



Dengue Disease Surveillance Report



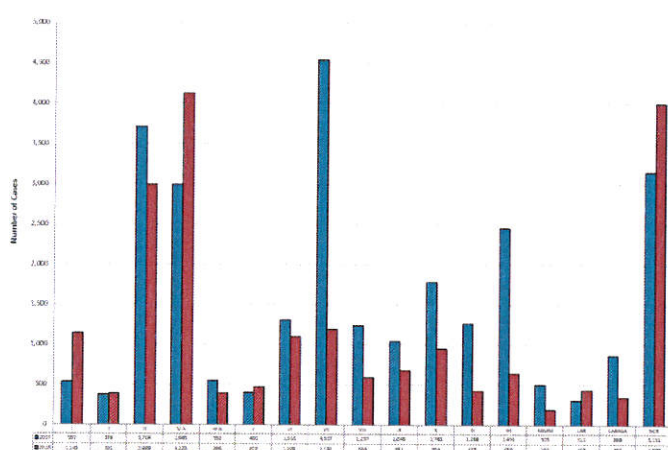
January 1 – March 10, 2018

Philippine Integrated Disease Surveillance and Response
Public Health Surveillance Division

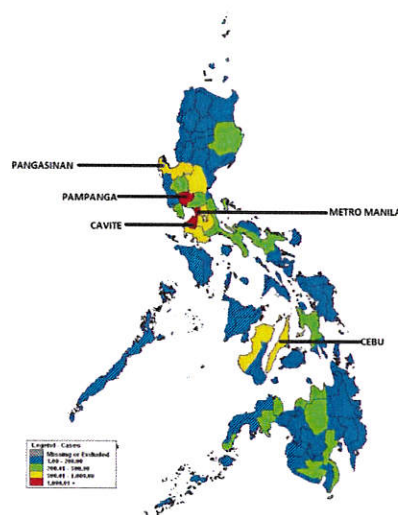
Geographic Distribution

Figures 3 and 4 shows that majority of the cases were from the following regions: **Region IVA** (20.51%), **NCR** (19.89%), **Region III** (14.86%), **Region VII** (5.93%) and **Region I** (5.69%). The provinces with the highest number of cases were from **Metro Manila** (19.89%), **Cavite** (8.13%), **Pampanga** (5.24%), **Cebu** (4.60%), and **Pangasinan** (4.47%).

**Fig. 3 Reported Dengue Cases by Region
Philippines, 2018* vs 2017 (N=20,108)**



**Fig. 4 Reported Dengue Cases by Province
Philippines, January 1 – March 1, 2018* (N=20,108)**



**Table 2. Reported Dengue Cases by Region
Philippines, 2018* vs 2017**

Region	Cases			Deaths				
	2018	2017	% Change	2018	CFR (%)	2017	CFR (%)	% Change CFR
I	1,145	537	↑ 113.22	8	0.70	3	0.56	25.07
II	391	378	↑ 3.44	1	0.26	2	0.53	-51.66
III	2,989	3,704	↓ -19.30	10	0.33	12	0.32	3.27
IV-A	4,125	2,985	↑ 38.19	22	0.53	15	0.50	6.13
MIMAROPA	396	552	↓ -28.26	1	0.25	0	0.00	39.00
V	473	400	↑ 18.25	5	1.06	2	0.50	111.42
VI	1,106	1,310	↓ -15.57	7	0.63	9	0.69	-7.88
VII	1,192	4,537	↓ -73.73	8	0.67	47	1.04	-35.21
VIII	594	1,237	↓ -51.98	4	0.67	5	0.40	66.60
IX	681	1,046	↓ -34.89	6	0.88	7	0.67	31.66
X	954	1,783	↓ -46.49	6	0.63	7	0.39	60.20
XI	428	1,268	↓ -66.25	1	0.23	11	0.87	-73.07
XII	650	2,451	↓ -73.48	1	0.15	15	0.61	-74.86
ARMM	193	505	↓ -61.78	1	0.52	4	0.79	-34.59
CAR	438	311	↑ 40.84	2	0.46	1	0.32	42.01
CARAGA	353	868	↓ -59.33	1	0.28	5	0.58	-50.82
NCR	4,000	3,151	↑ 26.94	15	0.38	13	0.41	-9.11
Total	20,108	27,023	↓ -25.59	99	0.49	158	0.58	-15.79

**Table 3. Reported Dengue Cases by Region and Case
Classification Philippines, (N=20,108)**

Region	Case Classification		
	Confirmed	Probable	Suspect
I	0	584	561
II	0	45	346
III	13	1,544	1,432
IV-A	4	1,394	2,727
MIMAROPA	0	191	205
V	2	83	388
VI	0	282	824
VII	0	385	807
VIII	2	143	449
IX	7	286	388
X	0	60	894
XI	14	22	392
XII	0	121	529
ARMM	0	72	121
CAR	3	242	193
CARAGA	0	5	348
NCR	16	1,381	2,603
Total	61	6,840	13,207

*NOTE: Case counts reported here do NOT represent the final number and are subject to change after inclusion of delayed reports and review of cases. All 2017 data reflects partial data only of all Regions.



Dengue Disease Surveillance Report



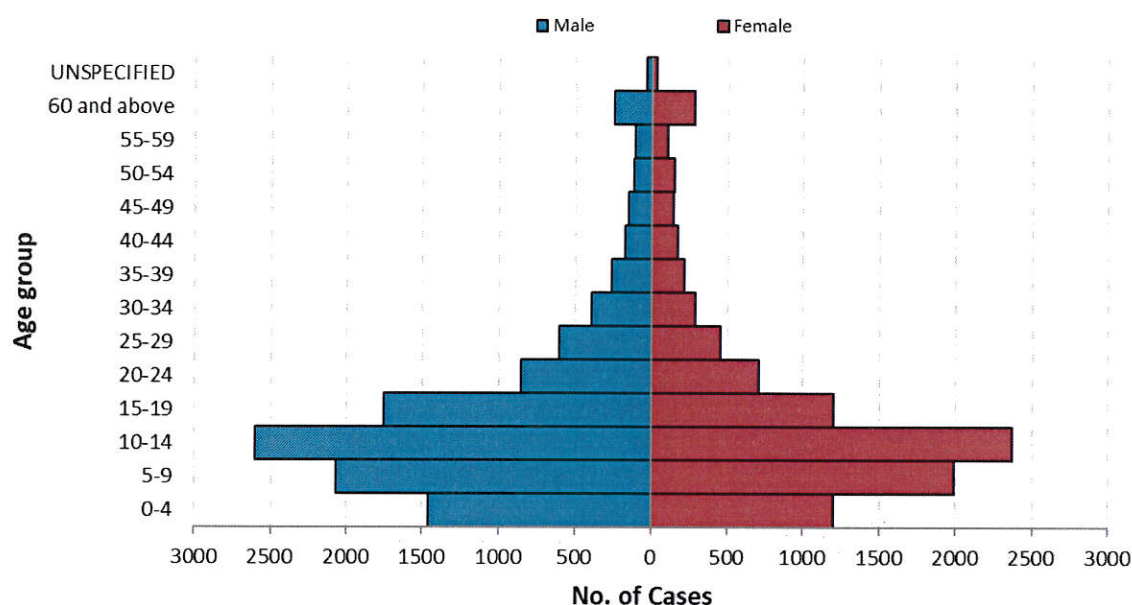
January 1 – March 10, 2018

Philippine Integrated Disease Surveillance and Response
Public Health Surveillance Division

Profile of Cases

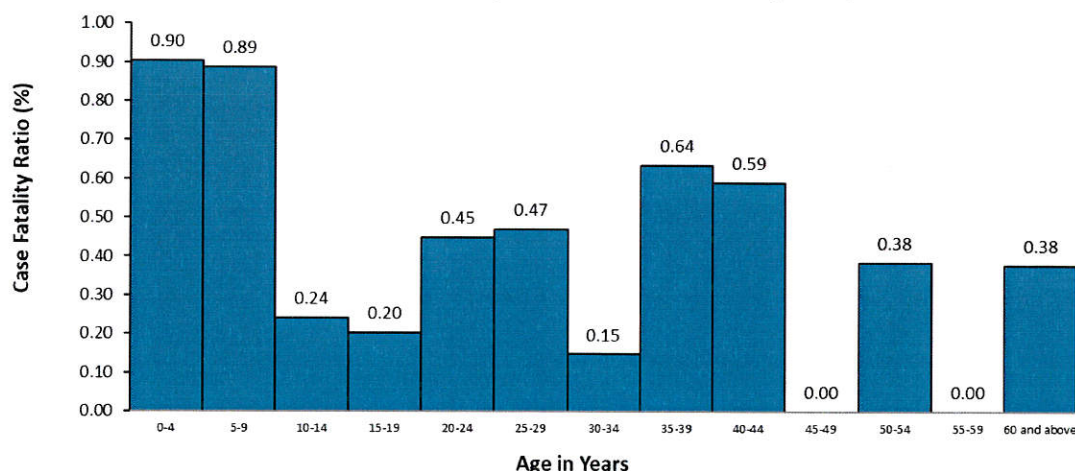
Ages of cases ranged from less than 1 month to 99 years old (median = 12 years). Most of the cases were male (53.70%). 24.70% of the cases belonged to the 10-14 years age group.

**Fig.5 Reported Dengue Cases by Age Group and Sex
Philippines, January 1 – March 10, 2018* (N= 20,108)**



There were 99 deaths (CFR = 0.49%) reported from January 1-March 10, 2018. This is lower compared to the same period last year, 158 deaths (CFR=0.58%) (Table 1). The age group that has the highest CFR is the 0-4 years old (0.90%) age group (Figure 6).

**Fig. 6 Reported Dengue Case Fatality Rate (CFR) by Age Group,
Philippines, January 1 – March 10, 2018* (n=99)**



**NOTE: Case counts reported here do NOT represent the final number and are subject to change after inclusion of delayed reports and review of cases. All 2017 data reflects partial data only of all Regions.*



Dengue Disease Surveillance Report



January 1 – March 10, 2018

Philippine Integrated Disease Surveillance and Response
Public Health Surveillance Division

Editorial Board


IRMA L. ASUNCION, MD, MHA, CESO III
Director IV, Epidemiology Bureau


GENESIS MAY J. SAMONTE, MD, MSc, PHSAE
OIC-Division Chief, PHSD


MARIEL A. DEJESA, MD, MPM
Medical Officer IV, PHSD


JUNE CANTATA B. CORPUZ, RN
Nurse III, PIDS National Coordinator


JEZZA JONAH D. CRUCENA, RN
Nurse III, VPDS National Coordinator

*NOTE: Case counts reported here do NOT represent the final number and are subject to change after inclusion of delayed reports and review of cases. All 2017 data reflects partial data only of all Regions.