



## Event-based Surveillance and Response Monthly Report for June, 2018

### June 2018 Summary of Captured Health Events

- From the 290 captured health events, 170 (59%) were verified as true
- NCR had the most number (59, 20%) of captured health events followed by Region 3 (35, 12%)
- The most number of verified health events were Vaccine Preventable Diseases (86, 51%) followed by Food and Waterborne Diseases (19, 11%)
- Most (81, 48%) of the status of health events were ongoing

CAPTURE	No.	%	VERIFICATION OF TRUE HE <sup>1</sup>	No.	%	VERIFICATION (cont'd)	No.	%
Total no. of HE <sup>1</sup> captured:	290		Verified by Central ESR	1	1%	Status:		
Source:			Verified by RESUs <sup>2</sup>	166	98%	Closed	48	28%
DOH	286	99%	Verified by IHR <sup>3</sup> focal units	3	2%	Controlled	41	24%
Internet	1	0%	Total	170	100%	Ongoing	81	48%
Others	3	1%	Disease Classification:			Total	170	100%
Total	290	100%	Vaccine Preventable Diseases	86	51%			
Regions with most no. of captured HE <sup>1</sup> :			Food and Waterborne Diseases	19	11%	ASSESSMENT	No.	%
NCR	59	20%	Zoonotic Diseases	28	16%	Level of Concern:		
Region 3	35	12%	Vector-borne Diseases	13	8%	PHELC <sup>7</sup>	150	88%
Region 6	31	11%	Maternal Death	11	6%	PHERC <sup>8</sup>	17	10%
Means of Capture:			Meningococcal Diseases	3	2%	PHENC <sup>9</sup>	3	2%
Active	1	0%	Others	10	6%	PHEIC <sup>10</sup>	0	0%
Passive	289	100%	AIDS <sup>5</sup> -Related Disease	0	0%	Total	170	100%
Total	290	100%	Chemical-related Diseases	0	0%			
			EREID <sup>4</sup>	0	0%	RESPONSE	No.	
			Total	170	100%	No. of HE <sup>1</sup> with local response	170	
						No. investigated by FETP <sup>13</sup> Fellows	4	
FILTER	No.	%	Top regions with verified HE <sup>1</sup> :			FEEDBACK	No.	
True health event	170	59%	NCR	47	28%	This month	290	
Discarded	114	39%	Region 3	22	13%	YTD <sup>12</sup>	2359	
FYI	6	2%	Region 6	17	10%			
Total	290	100%						

### Regional Distribution of Captured Health Events

Region	No. captured (June 2018)	VERIFIED AS TRUE HEALTH EVENTS						STATUS (this month)			ASSESSMENT (this month)				Total no. of HE <sup>1</sup> responded locally (this mo.)	Total no. of HE <sup>1</sup> with feedback to RO <sup>11</sup> (this mo.)
		2018			2017											
		June	Past 3 mos.	YTD <sup>12</sup>	This mo.	Past 3 mos.	YTD <sup>12</sup>	Closed	Con- trolled	On- going	PHELC <sup>7</sup>	PHERC <sup>8</sup>	PHENC <sup>9</sup>	PHEIC <sup>10</sup>		
Passive																
Region 1	21	11	17	65	15	64	87	5	6	0	6	5	0	0	11	21
Region 2	15	12	7	37	4	13	30	2	1	9	12	0	0	0	12	15
Region 3	35	21	28	168	12	22	47	7	8	7	19	2	0	0	21	35
Region 4A	21	13	62	271	15	26	37	2	2	9	12	1	0	0	13	21
Region 4B	4	3	7	24	4	10	18	1	1	1	3	0	0	0	3	4
Region 5	13	7	16	68	5	29	64	2	4	1	7	0	0	0	7	13
Region 6	31	17	27	126	23	74	134	10	6	1	15	2	0	0	17	31
Region 7	1	1	3	28	10	28	93	1	0	0	1	0	0	0	1	1
Region 8	18	8	4	38	16	21	43	4	2	1	8	0	0	0	8	18
Region 9	3	2	2	29	10	25	60	1	1	0	3	0	0	0	2	3
Region 10	1	1	4	20	5	10	16	1	0	0	1	0	0	0	1	1
Region 11	3	0	0	14	6	20	23	0	0	0	0	0	0	0	0	3
Region 12	15	5	13	67	20	87	196	3	2	0	5	0	0	0	5	15
ARMM	1	1	1	14	6	7	9	0	1	0	1	0	0	0	1	1
CAR	19	9	3	27	12	25	37	2	1	6	8	1	0	0	9	19
CARAGA	27	9	8	54	22	39	68	3	2	3	9	0	0	0	9	27
NCR	59	47	222	1002	23	73	157	3	4	40	42	5	0	0	47	59
IHR	2	2	1	9	4	9	16	0	0	3	0	0	2	0	2	2
Sub-total	289	169	425	2061	212	582	1135	47	41	81	152	16	2	0	169	289
Active	1	1	2	3	0	0	1	0	0	1	0	0	0	0	1	1
Total	290	170	427	2064	212	582	1136	47	41	82	152	16	2	0	170	290

#### Legend:

- Health Event
- Regional Epidemiology and Surveillance Unit
- International Health Regulations
- Emerging and Re-emerging Infectious Diseases
- Vaccine Preventable Diseases

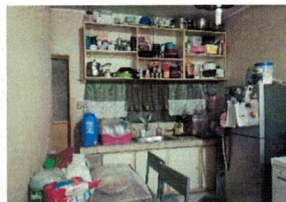
- Acquired Immune Deficiency Syndrome
- Public Health Event of Local Concern
- Public Health Event of Regional Concern
- Public Health Event of National Concern
- Public Health Emergency of International Concern

- Regional Office
- Year to date
- Field Epidemiology Training Program

## Event-based Surveillance and Response (ESR) Reports and Activity for this month

### Foodborne Cases In Clark Pampanga

- ESR-EB reported the event last June 4, 2018
- On June 4-8, 2018 FETP fellows with ESR and PIDSR officers conducted an epidemiologic investigation
- A total of 245 suspect foodborne illness cases were reported
- No death was reported
- Age range: 19 - 57 years old (Median: 24 years)
- Most (128, 52%) affected age group was 20 - 24 years old
- 140 rectal swabs were collected for laboratory testing with pending results



### Dengue Outbreak in Basco, Batanes

- ESR-EB reported the event last June 4, 2018
- On June 18- 22, 2018, FETP fellows conducted an epidemiologic investigation
- A total of 198 cases were reported
- Age range: 4 months - 52 years old (Median: 7 years)
- Most (121, 61%) affected group was 1-10 years old
- Majority (103, 52%) of cases were males
- 53 (27%) cases positive for Dengue NS1-Ag
- Brgy. Kayvaluganan (3 cases per 100 pop.) had the highest attack rate followed by Brgy. Kaychanarianan and Brgy. Kayhuvokan (2 cases per 100 pop.)



### Increasing Leptospirosis cases at the National Kidney and Transplant Institute

- ESR-EB reported the event last June 27, 2018
- On June 22- 28, 2018, FETP fellows with an ESR officer conducted an epidemiologic investigation
- A total of 132 cases were reported
- Age range: 9 - 72 years old (Median: 31 years)
- Most (113, 86%) of cases were from National Capital Region (NCR) followed by Region IV-A (9, 7%), and Region III (2, 2%)
- 50 specimens were collected for Microscopic Agglutination Test, 30 (60%) of which were positive for *Leptospira*



### Event-based Surveillance and Response (ESR) Database Management Training

- EB conducted the ESR Database Management Training on June 19 - 22, 2018 at Royce Hotel, Clark, Pampanga with the following objectives:

  1. To capacitate ESR officers on basic concepts of data management using MS Excel
  2. To develop a database on the variables on verification/follow-up forms
  3. To prepare monthly, quarterly, and annual ESR reports for dissemination to stakeholders



Prepared by:

*Lindsay Allen R. Tegrado*  
Lindsay Allen R. Tegrado, RN  
ESR Officer, AEHMD

Noted by:

*Herdie L. Hizon*  
Herdie L. Hizon

Supervising Health Program Officer, AEHMD

*Mariz Zheila C. Blanco*  
Mariz Zheila C. Blanco, RN  
ESR Officer, AEHMD

*Vikki Carr D. de los Reyes*  
Vikki Carr D. de los Reyes, MD, PHSAE  
FETP Training Officer, AEHMD

*Ma. Nemia L. Sucaldito*  
Ma. Nemia L. Sucaldito, MD, PHSAE  
Chief, Applied Epidemiology and Health Management Division

Approved by:

*Ferchito L. Avelino*  
Ferchito L. Avelino, MD, PHSAE  
OIC-Director IV, Epidemiology Bureau